

Product datasheet for **TA308317**

NKG2A (KLRC1) Rabbit Polyclonal Antibody

Product data:

Product Type:	Primary Antibodies
Applications:	IF, IHC, WB
Recommended Dilution:	ICC/IF:1:100-1:1000; IHC:1:100-1:1000; WB:1:500-1:3000
Reactivity:	Human (Predicted: Chimpanzee, Rhesus Monkey)
Host:	Rabbit
Isotype:	IgG
Clonality:	Polyclonal
Immunogen:	Synthetic peptide corresponding to a region within amino acids 1 and 45 of KLRC1 (Uniprot ID#P26715)
Formulation:	0.1M Tris, 0.1M Glycine, 10% Glycerol (pH7). 0.01% Thimerosal was added as a preservative.
Concentration:	lot specific
Purification:	Purified by antigen-affinity chromatography.
Conjugation:	Unconjugated
Storage:	Store at -20°C as received.
Stability:	Stable for 12 months from date of receipt.
Predicted Protein Size:	26 kDa
Gene Name:	killer cell lectin like receptor C1
Database Link:	NP_998823 Entrez Gene 3821 Human P26715



[View online »](#)

Background:

Natural killer (NK) cells are lymphocytes that can mediate lysis of certain tumor cells and virus-infected cells without previous activation. They can also regulate specific humoral and cell-mediated immunity. The protein encoded by this gene belongs to the killer cell lectin-like receptor family, also called NKG2 family, which is a group of transmembrane proteins preferentially expressed in NK cells. This family of proteins is characterized by the type II membrane orientation and the presence of a C-type lectin domain. This protein forms a complex with another family member, KLRD1/CD94, and has been implicated in the recognition of the MHC class I HLA-E molecules in NK cells. The genes of NKG2 family members form a killer cell lectin-like receptor gene cluster on chromosome 12. Four alternatively spliced transcript variants encoding two distinct isoforms have been observed. [provided by RefSeq]

Synonyms:

CD159A; NKG2; NKG2A

Note:

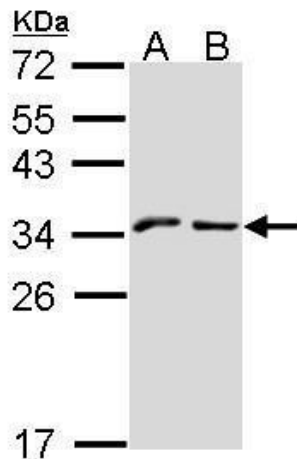
Seq homology of immunogen across species: Rhesus Monkey (100%), Chimpanzee (100%)

Protein Families:

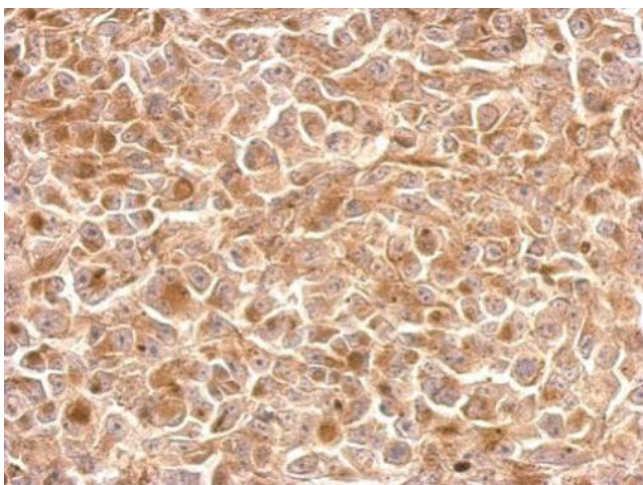
Transmembrane

Protein Pathways:

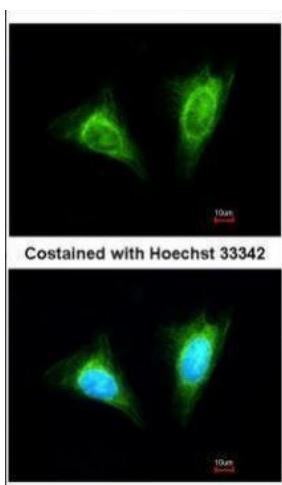
Antigen processing and presentation, Graft-versus-host disease, Natural killer cell mediated cytotoxicity

Product images:

Sample (30 ug of whole cell lysate). A: A431. B: Hep G2. 12% SDS PAGE. NKG2-A (CD159a) antibody. TA308317 diluted at 1:1000.



KLRC1 antibody [N1N2], N-term detects KLRC1 protein at cytosol on H1299 xenograft by immunohistochemical analysis. Sample: Paraffin-embedded H1299 xenograft. KLRC1 antibody [N1N2], N-term (TA308317) dilution: 1:500.



Immunofluorescence analysis of methanol-fixed HeLa, using KLRC1 (TA308317) antibody at 1:200 dilution.