

Product datasheet for **TA308315**

Liprin alpha 1 (PPFIA1) Rabbit Polyclonal Antibody

Product data:

Product Type:	Primary Antibodies
Applications:	IF, WB
Recommended Dilution:	ICC/IF:1:100-1:1000; WB:1:1000-1:10000
Reactivity:	Human
Host:	Rabbit
Isotype:	IgG
Clonality:	Polyclonal
Immunogen:	Recombinant fragment corresponding to a region within amino acids 18 and 277 of Liprin alpha 1 (Uniprot ID#Q13136)
Formulation:	0.1M Tris, 0.1M Glycine, 20% Glycerol (pH7). 0.01% Thimerosal was added as a preservative.
Concentration:	lot specific
Purification:	Purified by antigen-affinity chromatography.
Conjugation:	Unconjugated
Storage:	Store at -20°C as received.
Stability:	Stable for 12 months from date of receipt.
Predicted Protein Size:	136 kDa
Gene Name:	PTPRF interacting protein alpha 1
Database Link:	NP_003617 Entrez Gene 8500 Human Q13136

Background: The protein encoded by this gene is a member of the LAR protein-tyrosine phosphatase-interacting protein (liprin) family. Liprins interact with members of LAR family of transmembrane protein tyrosine phosphatases, which are known to be important for axon guidance and mammary gland development. This protein binds to the intracellular membrane-distal phosphatase domain of tyrosine phosphatase LAR, and appears to localize LAR to cell focal adhesions. This interaction may regulate the disassembly of focal adhesion and thus help orchestrate cell-matrix interactions. Alternatively spliced transcript variants encoding distinct isoforms have been described. [provided by RefSeq]

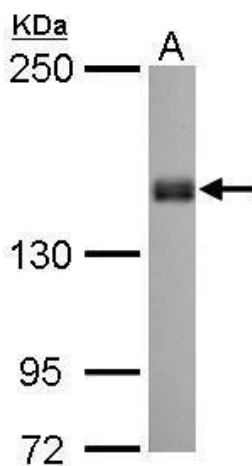


[View online »](#)

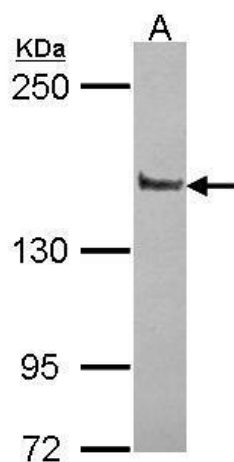
Synonyms: LIP.1; LIP1; LIPRIN

Protein Families: Druggable Genome, Phosphatase

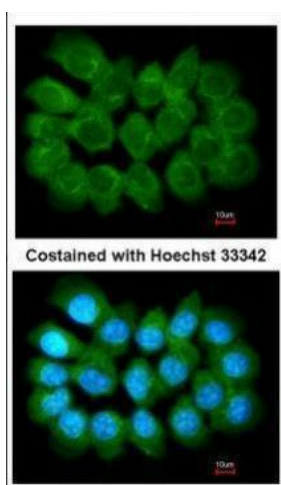
Product images:



Liprin alpha 1 antibody [N1N2], N-term detects PPFIA1 protein by Western blot analysis. A. 30 ug Neuro2A whole cell lysate/extract. 5 % SDS-PAGE. Liprin alpha 1 antibody [N1N2], N-term (TA308315) dilution: 1:1000



Sample (30 ug of whole cell lysate). A: JurKat. 5% SDS PAGE. TA308315 diluted at 1:10000.



Immunofluorescence analysis of methanol-fixed A431, using Liprin alpha 1 (TA308315) antibody at 1:200 dilution.