

Product datasheet for **TA308314**

TGF beta induced factor 2 (TGIF2) Rabbit Polyclonal Antibody

Product data:

Product Type:	Primary Antibodies
Applications:	WB
Recommended Dilution:	WB:1:500-1:3000
Reactivity:	Human (Predicted: Rat, Bovine, Rhesus Monkey, Mouse)
Host:	Rabbit
Isotype:	IgG
Clonality:	Polyclonal
Immunogen:	Synthetic peptide corresponding to a region within amino acids 161 and 237 of TGF beta induced factor 2
Formulation:	0.1M Tris, 0.1M Glycine, 10% Glycerol (pH7). 0.01% Thimerosal was added as a preservative.
Concentration:	lot specific
Purification:	Purified by antigen-affinity chromatography.
Conjugation:	Unconjugated
Storage:	Store at -20°C as received.
Stability:	Stable for 12 months from date of receipt.
Predicted Protein Size:	26 kDa
Gene Name:	TGFB induced factor homeobox 2
Database Link:	NP_068581 Entrez Gene 228839 Mouse Entrez Gene 499929 Rat Entrez Gene 60436 Human Q9GZN2
Background:	The protein encoded by this gene is a DNA-binding homeobox protein and a transcriptional repressor. The encoded protein appears to repress transcription by recruiting histone deacetylases to TGF beta-responsive genes. This gene is amplified and overexpressed in some ovarian cancers, and mutations in this gene can cause holoprosencephaly. [provided by RefSeq]
Synonyms:	TGFB-induced factor 2; TGFB-induced factor homeobox 2

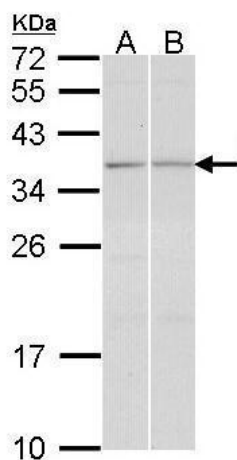


[View online »](#)

Note: Seq homology of immunogen across species: Mouse (90%), Rat (100%), Rhesus Monkey (100%), Bovine (90%)

Protein Families: Transcription Factors

Product images:



Sample (30 ug of whole cell lysate). A: A431. B: HeLa. 12% SDS PAGE. TA308314 diluted at 1:1000.