

## Product datasheet for **TA308313**

### NDUFA10 Rabbit Polyclonal Antibody

#### Product data:

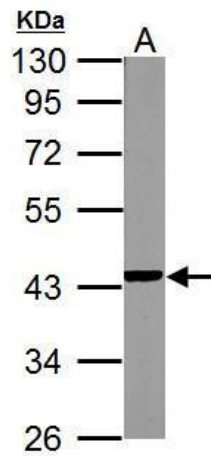
Product Type:	Primary Antibodies
Applications:	IF, IHC, WB
Recommended Dilution:	ICC/IF:1:100-1:1000; IHC:1:100-1:1000; WB:1:500-1:3000
Reactivity:	Human, Mouse (Expected from sequence similarity: Bovine)
Host:	Rabbit
Isotype:	IgG
Clonality:	Polyclonal
Immunogen:	Recombinant fragment corresponding to a region within amino acids 115 and 355 of NDUFA10 (Uniprot ID#O95299)
Formulation:	0.1M Tris, 0.1M Glycine, 20% Glycerol (pH7). 0.01% Thimerosal was added as a preservative.
Concentration:	lot specific
Purification:	Purified by antigen-affinity chromatography.
Conjugation:	Unconjugated
Storage:	Store at -20°C as received.
Stability:	Stable for 12 months from date of receipt.
Predicted Protein Size:	41 kDa
Gene Name:	NADH:ubiquinone oxidoreductase subunit A10
Database Link:	<a href="#">NP_004535</a> <a href="#">Entrez Gene 4705 Human</a> <a href="#">O95299</a>
Background:	The protein encoded by this gene belongs to the complex I 42kDA subunit family. Mammalian complex I is the first enzyme complex in the electron transport chain of mitochondria. It is composed of 45 different subunits. This protein is a component of the hydrophobic protein fraction and has NADH dehydrogenase activity and oxidoreductase activity. It transfers electrons from NADH to the respiratory chain. [provided by RefSeq]
Synonyms:	CI-42k; CI-42KD



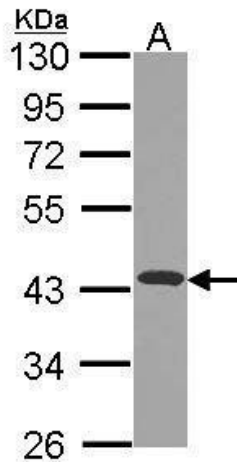
[View online »](#)

**Protein Pathways:** Alzheimer's disease, Huntington's disease, Metabolic pathways, Oxidative phosphorylation, Parkinson's disease

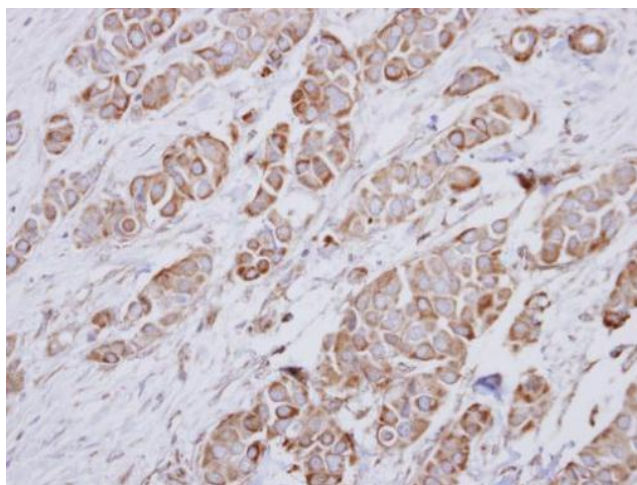
**Product images:**



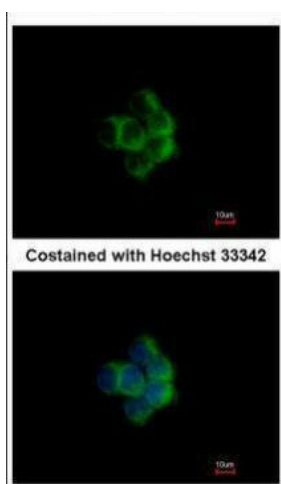
NDUFA10 antibody detects NDUFA10 protein by Western blot analysis. A. 50 ug mouse kidney lysate/extract. 10% SDS-PAGE. NDUFA10 antibody (TA308313) dilution: 1:1000.



Sample (30 ug of whole cell lysate). A: JurKat. 10% SDS PAGE. TA308313 diluted at 1:1000.



Immunohistochemical analysis of paraffin-embedded Breast ca, using NDUFA10 (TA308313) antibody at 1:250 dilution.



Immunofluorescence analysis of methanol-fixed A431, using NDUFA10 (TA308313) antibody at 1:200 dilution.