

Product datasheet for **TA308312**

NDUFA10 Rabbit Polyclonal Antibody

Product data:

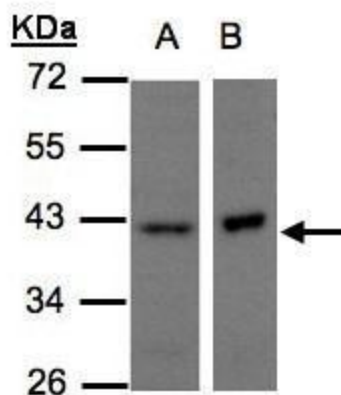
Product Type:	Primary Antibodies
Applications:	IF, IHC, WB
Recommended Dilution:	ICC/IF:1:100-1:1000; IHC:1:100-1:1000; WB:1:500-1:3000
Reactivity:	Human, Mouse (Predicted: Bovine)
Host:	Rabbit
Isotype:	IgG
Clonality:	Polyclonal
Immunogen:	Recombinant fragment corresponding to a region within amino acids 43 and 355 of NDUFA10 (Uniprot ID#O95299)
Formulation:	0.1M Tris, 0.1M Glycine, 10% Glycerol (pH7). 0.01% Thimerosal was added as a preservative.
Concentration:	lot specific
Purification:	Purified by antigen-affinity chromatography.
Conjugation:	Unconjugated
Storage:	Store at -20°C as received.
Stability:	Stable for 12 months from date of receipt.
Predicted Protein Size:	41 kDa
Gene Name:	NADH:ubiquinone oxidoreductase subunit A10
Database Link:	NP_004535 Entrez Gene 4705 Human O95299
Background:	The protein encoded by this gene belongs to the complex I 42kDA subunit family. Mammalian complex I is the first enzyme complex in the electron transport chain of mitochondria. It is composed of 45 different subunits. This protein is a component of the hydrophobic protein fraction and has NADH dehydrogenase activity and oxidoreductase activity. It transfers electrons from NADH to the respiratory chain. [provided by RefSeq]
Synonyms:	CI-42k; CI-42KD
Note:	Seq homology of immunogen across species: Bovine (82%)



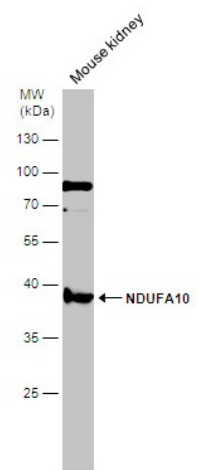
[View online »](#)

Protein Pathways: Alzheimer's disease, Huntington's disease, Metabolic pathways, Oxidative phosphorylation, Parkinson's disease

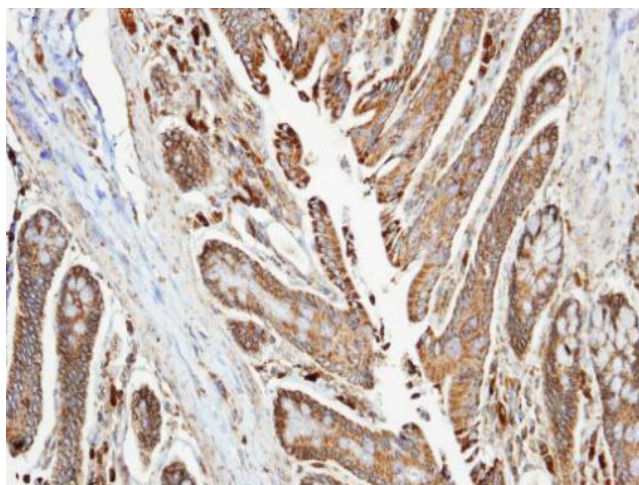
Product images:



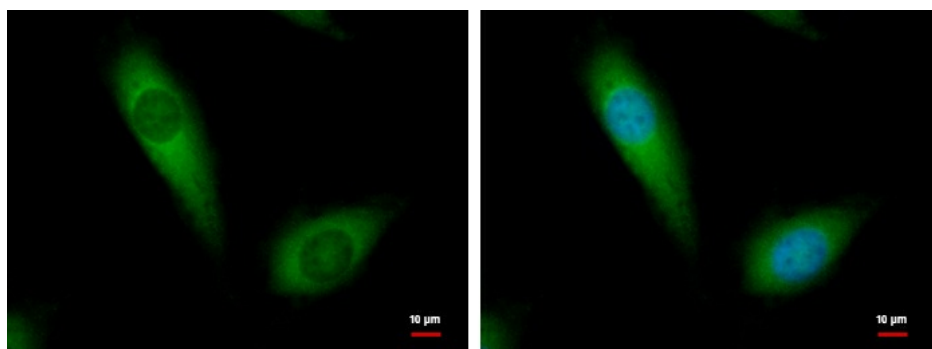
Sample (30 ug of whole cell lysate). A:H1299. B:Raji. 10% SDS PAGE. TA308312 diluted at 1:500



Mouse tissue extract (50 µg) was separated by 10% SDS-PAGE, and the membrane was blotted with NDUFA10 antibody TA308312 diluted at 1:500.



Immunohistochemical analysis of paraffin-embedded colon, using NDUFA10 (TA308312) antibody at 1:100 dilution.



NDUFA10 antibody [N1C3] detects NDUFA10 protein at cytoplasm by immunofluorescent analysis. Sample: HeLa cells were fixed in 2% paraformaldehyde/culture medium at 37°C for 30min. Green: NDUFA10 protein stained by NDUFA10 antibody [N1C3] (TA308312) dilute