

Product datasheet for **TA308311**

BIVM Rabbit Polyclonal Antibody

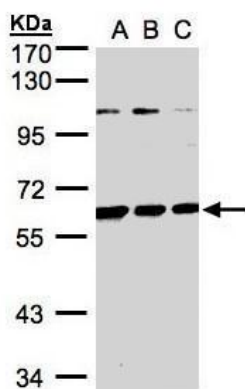
Product data:

Product Type:	Primary Antibodies
Applications:	IF, IHC, WB
Recommended Dilution:	ICC/IF:1:100-1:1000; IHC:1:100-1:1000; WB:1:500-1:3000
Reactivity:	Human (Predicted: Dog, Pig, Chicken)
Host:	Rabbit
Isotype:	IgG
Clonality:	Polyclonal
Immunogen:	Synthetic peptide corresponding to a region within amino acids 439 and 503 of BIVM (Uniprot ID#Q86UB2)
Formulation:	0.1M Tris, 0.1M Glycine, 10% Glycerol (pH7). 0.01% Thimerosal was added as a preservative.
Concentration:	lot specific
Purification:	Purified by antigen-affinity chromatography.
Conjugation:	Unconjugated
Storage:	Store at -20°C as received.
Stability:	Stable for 12 months from date of receipt.
Predicted Protein Size:	57 kDa
Gene Name:	basic, immunoglobulin-like variable motif containing
Database Link:	NP_060163 Entrez Gene 485539 Dog Entrez Gene 54841 Human Q86UB2
Synonyms:	FLJ44301; FLJ44556; MGC133326
Note:	Seq homology of immunogen across species: Dog (100%), Pig (100%), Chicken (80%)

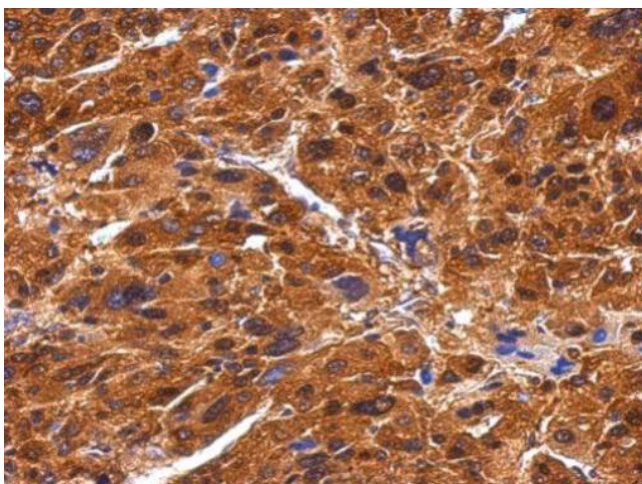


[View online »](#)

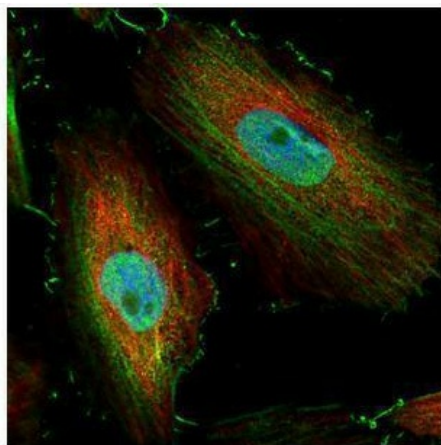
Product images:



Sample (30 ug whole cell lysate). A:H1299. B:HeLa S3. C:Hep G2. 7.5% SDS PAGE. TA308311 diluted at 1:1000



Immunohistochemical analysis of paraffin-embedded Hepatoma, using BIVM (TA308311) antibody at 1:500 dilution.



Confocal immunofluorescence analysis (Olympus FV10i) of paraformaldehyde-fixed HeLa, using BIVM (TA308311) antibody (Green) at 1:500 dilution. Alpha-tubulin filaments were labeled with anti-alpha tubulin antibody (Red) at 1:2000.