

Product datasheet for **TA308310**

HLA DM (HLA-DMA) Rabbit Polyclonal Antibody

Product data:

Product Type:	Primary Antibodies
Applications:	IHC, WB
Recommended Dilution:	IHC:1:100-1:1000; WB:1:500-1:3000
Reactivity:	Human (Predicted: Bovine)
Host:	Rabbit
Isotype:	IgG
Clonality:	Polyclonal
Immunogen:	Recombinant protein fragment contain a sequence corresponding to a region within amino acids 52 and 245 of HLA-DMA
Formulation:	0.1M Tris, 0.1M Glycine, 20% Glycerol (pH7). 0.01% Thimerosal was added as a preservative.
Concentration:	lot specific
Purification:	Purified by antigen-affinity chromatography.
Conjugation:	Unconjugated
Storage:	Store at -20°C as received.
Stability:	Stable for 12 months from date of receipt.
Predicted Protein Size:	29 kDa
Gene Name:	major histocompatibility complex, class II, DM alpha
Database Link:	NP_006111 Entrez Gene 3108 Human
Background:	HLA-DMA belongs to the HLA class II alpha chain paralogues. This class II molecule is a heterodimer consisting of an alpha (DMA) and a beta chain (DMB), both anchored in the membrane. It is located in intracellular vesicles. DM plays a central role in the peptide loading of MHC class II molecules by helping to release the CLIP molecule from the peptide binding site. Class II molecules are expressed in antigen presenting cells (APC: B lymphocytes, dendritic cells, macrophages). The alpha chain is approximately 33-35 kDa and its gene contains 5 exons. Exon one encodes the leader peptide, exons 2 and 3 encode the two extracellular domains, exon 4 encodes the transmembrane domain and the cytoplasmic tail. [provided by RefSeq]



[View online »](#)

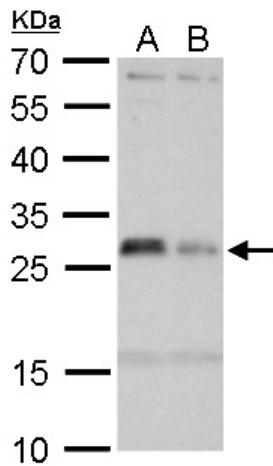
Synonyms: D6S222E; DMA; HLADM; RING6

Note: Seq homology of immunogen across species: Bovine (83%)

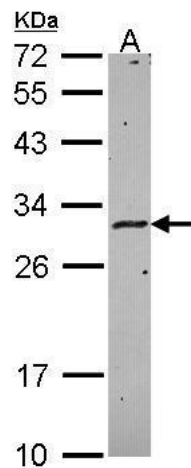
Protein Families: Transmembrane

Protein Pathways: Allograft rejection, Antigen processing and presentation, Asthma, Autoimmune thyroid disease, Cell adhesion molecules (CAMs), Graft-versus-host disease, Systemic lupus erythematosus, Type I diabetes mellitus, Viral myocarditis

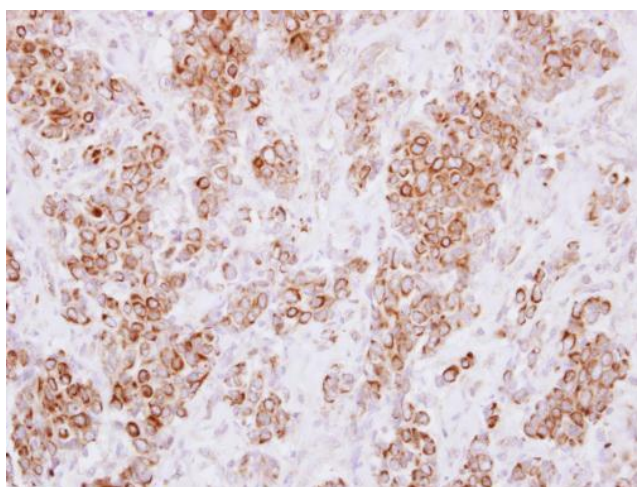
Product images:



HLA-DMA antibody detects HLA-DMA protein by Western blot analysis. A. 30 ug Jurkat whole cell lysate/extract. B. 30 ug Raji whole cell lysate/extract. 12 % SDS-PAGE. HLA-DMA antibody (TA308310) dilution: 1:500



Sample (30 ug of whole cell lysate). A: HeLa. 12% SDS PAGE. TA308310 diluted at 1:1000.



Immunohistochemical analysis of paraffin-embedded Breast ca, using HLA-DMA (TA308310) antibody at 1:250 dilution.