

Product datasheet for **TA308309**

GEM Rabbit Polyclonal Antibody

Product data:

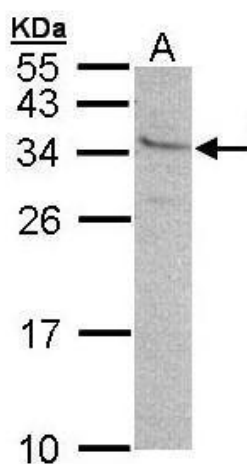
Product Type:	Primary Antibodies
Applications:	IHC, WB
Recommended Dilution:	IHC:1:100-1:1000; WB:1:500-1:3000
Reactivity:	Human (Predicted: Mouse, Rat, Bovine)
Host:	Rabbit
Isotype:	IgG
Clonality:	Polyclonal
Immunogen:	Synthetic peptide corresponding to a region within amino acids 1 and 44 of GEM (Uniprot ID#P55040)
Formulation:	1XPBS, 20% Glycerol (pH7). 0.01% Thimerosal was added as a preservative.
Concentration:	lot specific
Purification:	Purified by antigen-affinity chromatography.
Conjugation:	Unconjugated
Storage:	Store at -20°C as received.
Stability:	Stable for 12 months from date of receipt.
Predicted Protein Size:	34 kDa
Gene Name:	GTP binding protein overexpressed in skeletal muscle
Database Link:	NP_859053 Entrez Gene 14579 MouseEntrez Gene 297902 RatEntrez Gene 2669 Human P55040
Background:	The protein encoded by this gene belongs to the RAD/GEM family of GTP-binding proteins. It is associated with the inner face of the plasma membrane and could play a role as a regulatory protein in receptor-mediated signal transduction. Alternative splicing occurs at this locus and two transcript variants encoding the same protein have been identified. [provided by RefSeq]
Synonyms:	KIR
Note:	Seq homology of immunogen across species: Mouse (100%), Rat (100%), Bovine (85%)



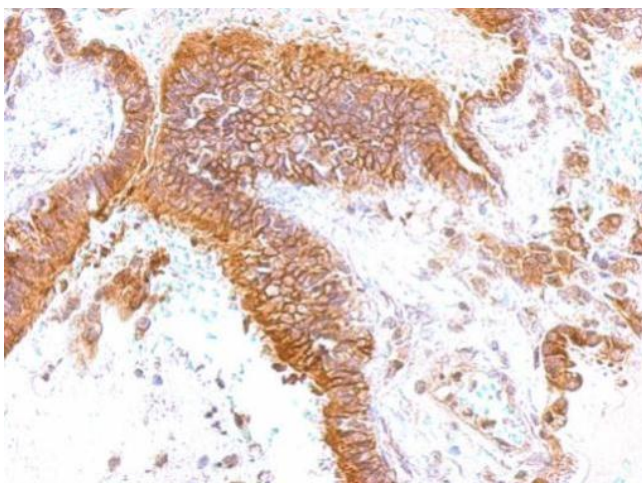
[View online »](#)

Protein Families: Druggable Genome

Product images:



Sample (30 ug of whole cell lysate). A: 293T. 12% SDS PAGE. TA308309 diluted at 1:500.



GEM antibody [N1], N-term detects GEM protein at membrane on lung by immunohistochemical analysis. Sample: Paraffin-embedded lung. GEM antibody [N1], N-term (TA308309) dilution: 1:500.