

Product datasheet for **TA308308**

STMN2 Rabbit Polyclonal Antibody

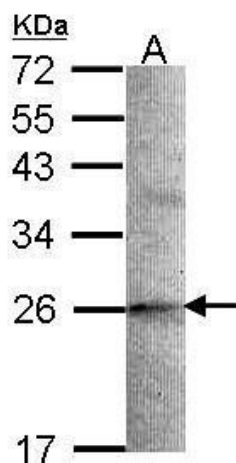
Product data:

Product Type:	Primary Antibodies
Applications:	IF, IHC, WB
Recommended Dilution:	ICC/IF:1:100-1:1000; IHC:1:100-1:1000; WB:1:500-1:3000
Reactivity:	Human (Predicted: Rat, Chicken, Bovine, Rhesus Monkey, Mouse)
Host:	Rabbit
Isotype:	IgG
Clonality:	Polyclonal
Immunogen:	Synthetic peptide corresponding to a region within amino acids 2 and 41 of STMN2
Formulation:	0.1M Tris, 0.1M Glycine, 10% Glycerol (pH7). 0.01% Thimerosal was added as a preservative.
Concentration:	lot specific
Purification:	Purified by antigen-affinity chromatography.
Conjugation:	Unconjugated
Storage:	Store at -20°C as received.
Stability:	Stable for 12 months from date of receipt.
Predicted Protein Size:	21 kDa
Gene Name:	stathmin 2
Database Link:	NP_008960 Entrez Gene 20257 Mouse Entrez Gene 84510 Rat Entrez Gene 11075 Human Q93045
Background:	Superior cervical ganglion-10 is a neuronal growth-associated protein that shares significant amino acid sequence similarity with the phosphoprotein stathmin (MIM 151442). [supplied by OMIM]
Synonyms:	SCG10; SCGN10
Note:	Seq homology of immunogen across species: Mouse (100%), Rat (100%), Chicken (100%), Rhesus Monkey (100%), Bovine (100%)

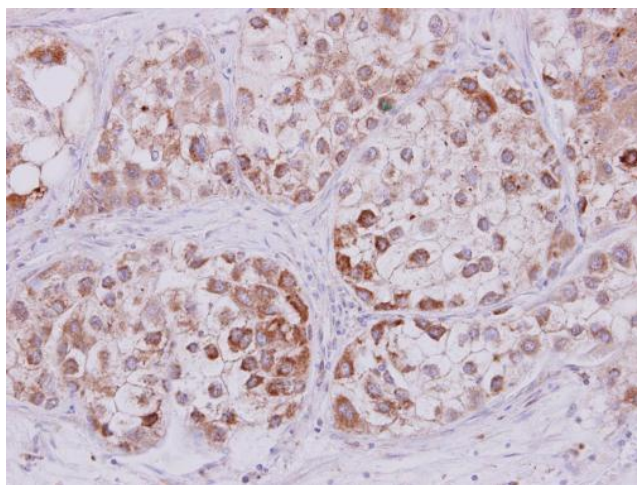


[View online »](#)

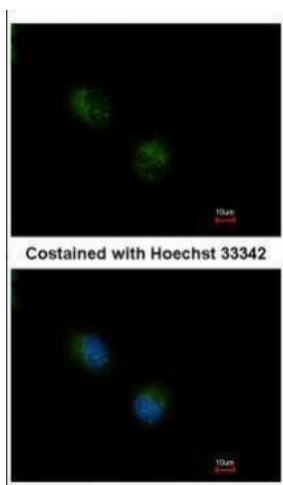
Product images:



Sample (30 ug of whole cell lysate). A: A549 12% SDS PAGE. TA308308 diluted at 1:1000.



STMN2 antibody detects STMN2 protein at cytoplasm on Liver carcinoma by immunohistochemical analysis. Sample: Paraffin-embedded Liver carcinoma. STMN2 antibody (TA308308) dilution: 1:250.



Immunofluorescence analysis of methanol-fixed A549, using STMN2 (TA308308) antibody at 1:500 dilution.