

## Product datasheet for **TA308306**

### NDUFA5 Rabbit Polyclonal Antibody

#### Product data:

Product Type:	Primary Antibodies
Applications:	IHC, WB
Recommended Dilution:	IHC:1:100-1:1000; WB:1:500-1:3000
Reactivity:	Human, Mouse (Predicted: Chimpanzee)
Host:	Rabbit
Isotype:	IgG
Clonality:	Polyclonal
Immunogen:	Recombinant fragment corresponding to a region within amino acids 1 and 116 of NDUFA5 (Uniprot ID#Q16718)
Formulation:	0.1M Tris, 0.1M Glycine, 20% Glycerol (pH7). 0.01% Thimerosal was added as a preservative.
Concentration:	lot specific
Purification:	Purified by antigen-affinity chromatography.
Conjugation:	Unconjugated
Storage:	Store at -20°C as received.
Stability:	Stable for 12 months from date of receipt.
Predicted Protein Size:	13 kDa
Gene Name:	NADH:ubiquinone oxidoreductase subunit A5
Database Link:	<a href="#">NP_004991</a> <a href="#">Entrez Gene 68202 Mouse</a> <a href="#">Entrez Gene 4698 Human</a> <a href="#">Q16718</a>



[View online »](#)

**Background:**

The human NDUFA5 gene codes for the B13 subunit of complex I of the respiratory chain, which transfers electrons from NADH to ubiquinone. The high degree of conservation of NDUFA5 extending to plants and fungi indicates its functional significance in the enzyme complex. The protein localizes to the inner mitochondrial membrane as part of the 7 component-containing, water soluble "iron-sulfur protein" (IP) fraction of complex I, although its specific role is unknown. It is assumed to undergo post-translational removal of the initiator methionine and N-acetylation of the next amino acid. The predicted secondary structure is primarily alpha helix, but the carboxy-terminal half of the protein has high potential to adopt a coiled-coil form. The amino-terminal part contains a putative beta sheet rich in hydrophobic amino acids that may serve as mitochondrial import signal. Related pseudogenes have also been identified on four other chromosomes. [provided by RefSeq]

**Synonyms:**

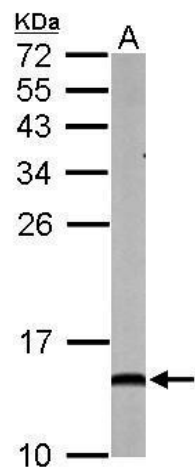
B13; CI-13kB; CI-13KD-B; NUFM; UQOR13

**Note:**

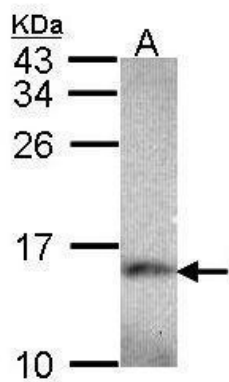
Seq homology of immunogen across species: Chimpanzee (100%)

**Protein Pathways:**

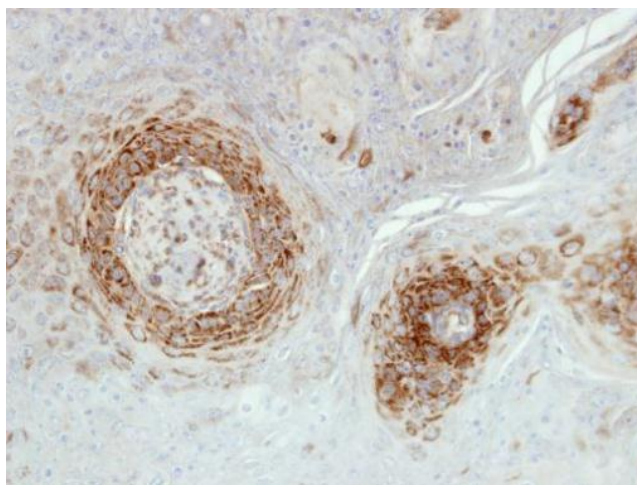
Alzheimer's disease, Huntington's disease, Metabolic pathways, Oxidative phosphorylation, Parkinson's disease

**Product images:**

Sample (50 ug of whole cell lysate). A: mouse brain. 15% SDS PAGE. TA308306 diluted at 1:1000.



Sample (30 ug of whole cell lysate). A: Hep G2. 15% SDS PAGE. TA308306 diluted at 1:1000.



Immunohistochemical analysis of paraffin-embedded Cal27 xenograft, using NDUFA5 (TA308306) antibody at 1:500 dilution.