

Product datasheet for **TA308305**

DUSP26 Rabbit Polyclonal Antibody

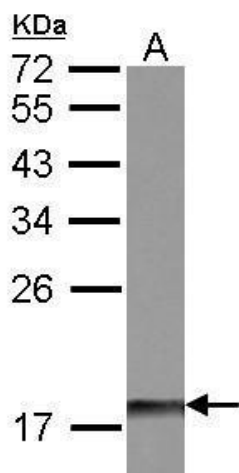
Product data:

Product Type:	Primary Antibodies
Applications:	IF, WB
Recommended Dilution:	ICC/IF:1:100-1:1000; WB:1:500-1:3000
Reactivity:	Human, Mouse (Predicted: Rat, Bovine, Rhesus Monkey)
Host:	Rabbit
Isotype:	IgG
Clonality:	Polyclonal
Immunogen:	Synthetic peptide corresponding to a region within amino acids 22 and 117 of DUSP26 (Uniprot ID#Q9BV47)
Formulation:	0.1M Tris, 0.1M Glycine, 10% Glycerol (pH7). 0.01% Thimerosal was added as a preservative.
Concentration:	lot specific
Purification:	Purified by antigen-affinity chromatography.
Conjugation:	Unconjugated
Storage:	Store at -20°C as received.
Stability:	Stable for 12 months from date of receipt.
Predicted Protein Size:	24 kDa
Gene Name:	dual specificity phosphatase 26 (putative)
Database Link:	NP_076930 Entrez Gene 66959 Mouse Entrez Gene 306527 Rat Entrez Gene 78986 Human Q9BV47
Synonyms:	DSP-4; DUSP24; LDP-4; MKP-8; MKP8; NATA1; NEAP; SKRP3
Note:	Seq homology of immunogen across species: Rat (100%), Rhesus Monkey (94%), Bovine (81%)
Protein Families:	Druggable Genome, Phosphatase

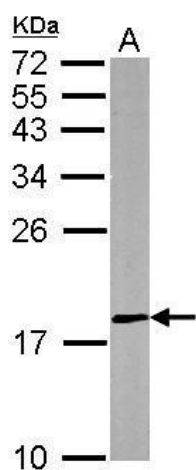


[View online »](#)

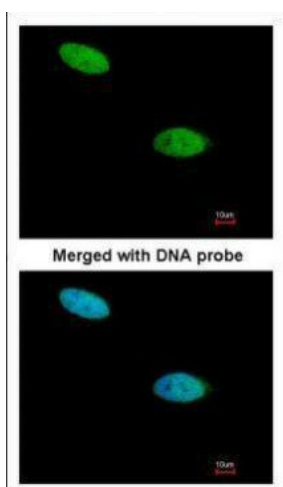
Product images:



Sample (30 ug of whole cell lysate). A: IMR32. 12% SDS PAGE. TA308305 diluted at 1:500.



Sample (50 ug of whole cell lysate). A: mouse brain. 12% SDS PAGE. TA308305 diluted at 1:500.



Immunofluorescence analysis of paraformaldehyde-fixed HeLa, using DUSP26 (TA308305) antibody at 1:200 dilution.