

## Product datasheet for **TA308304**

### CMG1 (IFT74) Rabbit Polyclonal Antibody

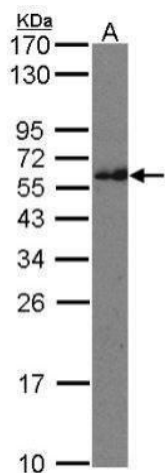
#### Product data:

Product Type:	Primary Antibodies
Applications:	IF, WB
Recommended Dilution:	ICC/IF:1:100-1:1000; WB:1:500-1:3000
Reactivity:	Human
Host:	Rabbit
Isotype:	IgG
Clonality:	Polyclonal
Immunogen:	Synthetic peptide corresponding to a region within amino acids 538 and 600 of CMG1 (Uniprot ID#Q96LB3)
Formulation:	0.1M Tris, 0.1M Glycine, 10% Glycerol (pH7). 0.01% Thimerosal was added as a preservative.
Concentration:	lot specific
Purification:	Purified by antigen-affinity chromatography.
Conjugation:	Unconjugated
Storage:	Store at -20°C as received.
Stability:	Stable for 12 months from date of receipt.
Predicted Protein Size:	69 kDa
Gene Name:	intraflagellar transport 74
Database Link:	<a href="#">NP_001092694</a> <a href="#">Entrez Gene 80173 Human</a> <a href="#">Q96LB3</a>
Synonyms:	BBS20; CCDC2; CMG-1; CMG1

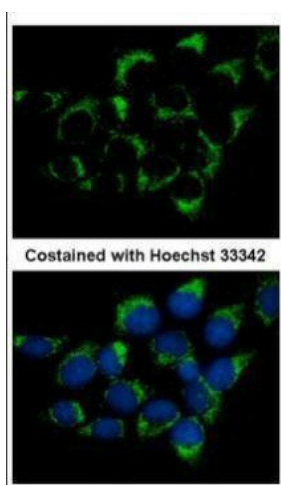


[View online »](#)

## Product images:



Sample (30 ug of whole cell lysate). A: Raji. 12% SDS PAGE. TA308304 diluted at 1:500



Immunofluorescence analysis of methanol-fixed A431, using CMG1 (TA308304) antibody at 1:500 dilution.