

Product datasheet for **TA308300**

NDUFS1 Rabbit Polyclonal Antibody

Product data:

Product Type:	Primary Antibodies
Applications:	IF, IHC, WB
Recommended Dilution:	ICC/IF:1:100-1:1000; IHC:1:100-1:1000; WB:1:500-1:3000
Reactivity:	Human, Mouse (Predicted: Chimpanzee)
Host:	Rabbit
Isotype:	IgG
Clonality:	Polyclonal
Immunogen:	Recombinant fragment corresponding to a region within amino acids 432 and 664 of NDUFS1 (Uniprot ID#P28331)
Formulation:	0.1M Tris, 0.1M Glycine, 20% Glycerol (pH7). 0.01% Thimerosal was added as a preservative.
Concentration:	lot specific
Purification:	Purified by antigen-affinity chromatography.
Conjugation:	Unconjugated
Storage:	Store at -20°C as received.
Stability:	Stable for 12 months from date of receipt.
Predicted Protein Size:	28 kDa
Gene Name:	NADH:ubiquinone oxidoreductase core subunit S1
Database Link:	NP_004997 Entrez Gene 227197 Mouse Entrez Gene 4719 Human P28331

Background: The protein encoded by this gene belongs to the complex I 75 kDa subunit family. Mammalian complex I is composed of 45 different subunits. It locates at the mitochondrial inner membrane. This protein has NADH dehydrogenase activity and oxidoreductase activity. It transfers electrons from NADH to the respiratory chain. The immediate electron acceptor for the enzyme is believed to be ubiquinone. This protein is the largest subunit of complex I and it is a component of the iron-sulfur (IP) fragment of the enzyme. It may form part of the active site crevice where NADH is oxidized. Mutations in this gene are associated with complex I deficiency. [provided by RefSeq]



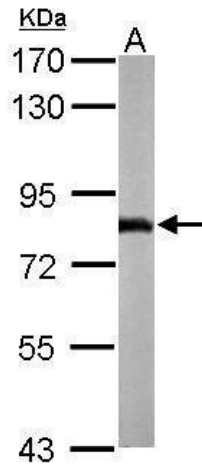
[View online »](#)

Synonyms: CI-75k; CI-75Kd; PRO1304

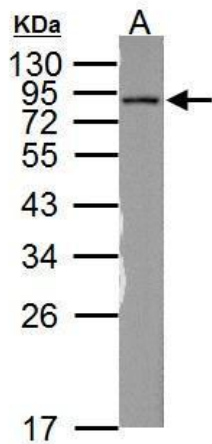
Note: Seq homology of immunogen across species: Chimpanzee (100%)

Protein Pathways: Alzheimer's disease, Huntington's disease, Metabolic pathways, Oxidative phosphorylation, Parkinson's disease

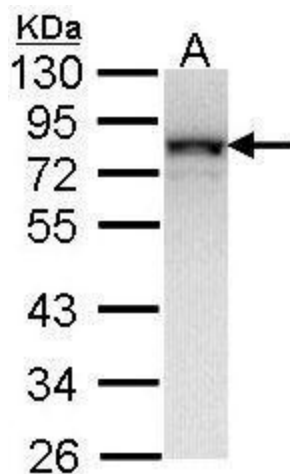
Product images:



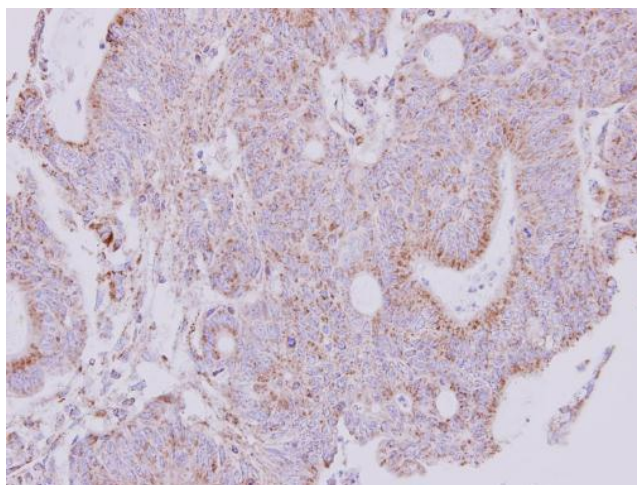
Sample (50 ug of whole cell lysate). A: Mouse brain. 7.5% SDS PAGE. TA308300 diluted at 1:1000.



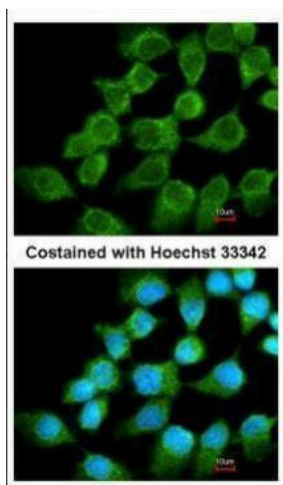
Sample (50 ug of whole cell lysate). A: Rat brain. 12% SDS PAGE. TA308300 diluted at 1:1000.



Sample (30 ug of whole cell lysate). A: Molt-4. 12% SDS PAGE. TA308300 diluted at 1:1000.



Immunohistochemical analysis of paraffin-embedded Colon ca, using NDUFS1 (TA308300) antibody at 1:250 dilution.



Immunofluorescence analysis of methanol-fixed A431, using NDUFS1 (TA308300) antibody at 1:200 dilution.