

Product datasheet for **TA308299**

Deltex (DTX1) Rabbit Polyclonal Antibody

Product data:

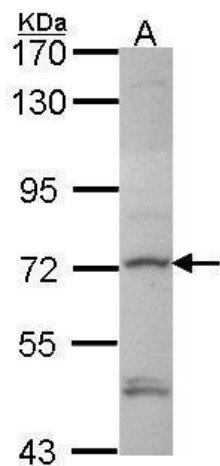
Product Type:	Primary Antibodies
Applications:	IF, IHC, WB
Recommended Dilution:	ICC/IF:1:100-1:1000; IHC:1:100-1:1000; WB:1:500-1:3000
Reactivity:	Human (Predicted: Mouse, Xenopus, Bovine)
Host:	Rabbit
Isotype:	IgG
Clonality:	Polyclonal
Immunogen:	Recombinant fragment corresponding to a region within amino acids 343 and 617 of Deltex1 (Uniprot ID#Q86Y01)
Formulation:	0.1M Tris, 0.1M Glycine, 20% Glycerol (pH7). 0.01% Thimerosal was added as a preservative.
Concentration:	lot specific
Purification:	Purified by antigen-affinity chromatography.
Conjugation:	Unconjugated
Storage:	Store at -20°C as received.
Stability:	Stable for 12 months from date of receipt.
Predicted Protein Size:	67 kDa
Gene Name:	deltex 1
Database Link:	NP_004407 Entrez Gene 14357 Mouse Entrez Gene 1840 Human Q86Y01
Background:	Studies in Drosophila have identified this gene as encoding a positive regulator of the Notch-signaling pathway. The human gene encodes a protein of unknown function; however, it may play a role in basic helix-loop-helix transcription factor activity. [provided by RefSeq]
Synonyms:	hDx-1
Note:	Seq homology of immunogen across species: Mouse (98%), Xenopus laevis (86%), Bovine (99%)
Protein Families:	Druggable Genome, Transcription Factors



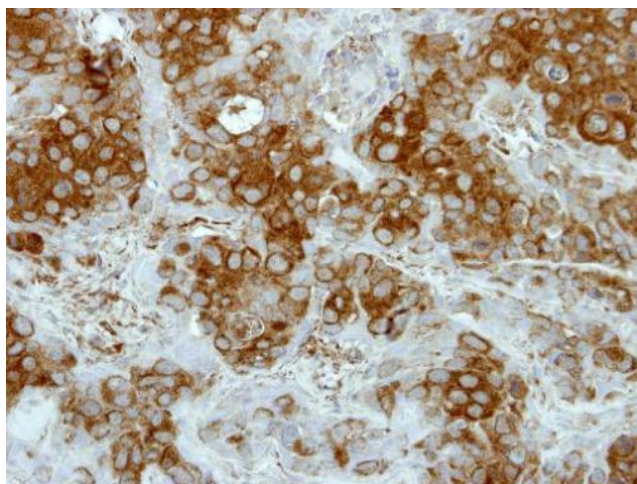
[View online »](#)

Protein Pathways: Notch signaling pathway

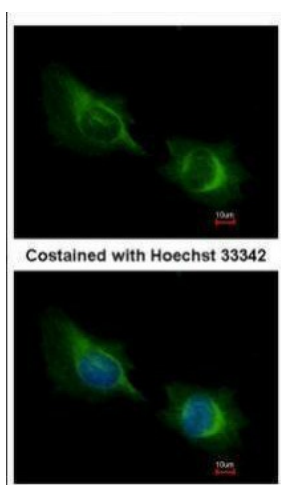
Product images:



Sample (30 ug of whole cell lysate). A: HeLa. 7.5% SDS PAGE. TA308299 diluted at 1:1000.



Immunohistochemical analysis of paraffin-embedded BT474 xenograft, using Deltex1 (TA308299) antibody at 1:500 dilution.



Immunofluorescence analysis of methanol-fixed HeLa, using Deltex1 (TA308299) antibody at 1:200 dilution.