

## Product datasheet for **TA308296**

### CD1B Rabbit Polyclonal Antibody

#### Product data:

Product Type:	Primary Antibodies
Applications:	WB
Recommended Dilution:	WB:1:500-1:3000
Reactivity:	Human (Predicted: Monkey)
Host:	Rabbit
Isotype:	IgG
Clonality:	Polyclonal
Immunogen:	Recombinant fragment corresponding to a region within amino acids 61 and 288 of CD1B (Uniprot ID#P29016)
Formulation:	0.1M Tris, 0.1M Glycine, 10% Glycerol (pH7). 0.01% Thimerosal was added as a preservative.
Concentration:	lot specific
Purification:	Purified by antigen-affinity chromatography.
Conjugation:	Unconjugated
Storage:	Store at -20°C as received.
Stability:	Stable for 12 months from date of receipt.
Predicted Protein Size:	37 kDa
Gene Name:	CD1b molecule
Database Link:	<a href="#">NP_001755</a> <a href="#">Entrez Gene 718955 Monkey</a> <a href="#">Entrez Gene 910 Human</a> <a href="#">P29016</a>



[View online »](#)

**Background:**

This gene encodes a member of the CD1 family of transmembrane glycoproteins, which are structurally related to the major histocompatibility complex (MHC) proteins and form heterodimers with beta-2-microglobulin. The CD1 proteins mediate the presentation of primarily lipid and glycolipid antigens of self or microbial origin to T cells. The human genome contains five CD1 family genes organized in a cluster on chromosome 1. The CD1 family members are thought to differ in their cellular localization and specificity for particular lipid ligands. The protein encoded by this gene localizes to late endosomes and lysosomes via a tyrosine-based motif in the cytoplasmic tail, and requires vesicular acidification to bind lipid antigens. [provided by RefSeq]

**Synonyms:**

CD1; CD1A; R1

**Note:**

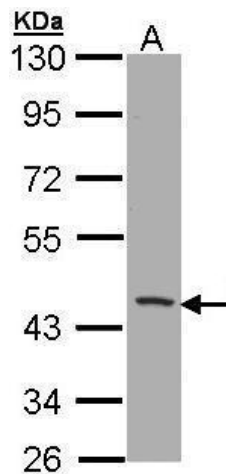
Seq homology of immunogen across species: Monkey (95%)

**Protein Families:**

Druggable Genome, Transmembrane

**Protein Pathways:**

Hematopoietic cell lineage

**Product images:**

Sample (30 ug of whole cell lysate). A: H1299.  
10% SDS PAGE. TA308296 diluted at 1:1000.