

Product datasheet for **TA308295**

TCP1 theta (CCT8) Rabbit Polyclonal Antibody

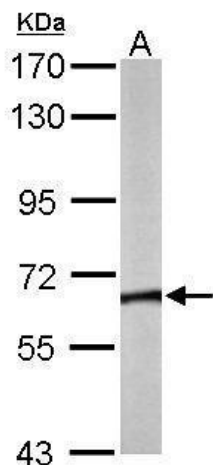
Product data:

Product Type:	Primary Antibodies
Applications:	IHC, WB
Recommended Dilution:	IHC:1:100-1:1000; WB:1:1000-1:10000
Reactivity:	Human, Mouse (Predicted: Chicken, Rat, Xenopus, Zebrafish, X. tropicalis)
Host:	Rabbit
Isotype:	IgG
Clonality:	Polyclonal
Immunogen:	Recombinant fragment corresponding to a region within amino acids 111 and 367 of TCP1 theta (Uniprot ID#P50990)
Formulation:	1XPBS, 1% BSA, 20% Glycerol (pH7). 0.01% Thimerosal was added as a preservative.
Concentration:	lot specific
Purification:	Purified by antigen-affinity chromatography.
Conjugation:	Unconjugated
Storage:	Store at -20°C as received.
Stability:	Stable for 12 months from date of receipt.
Predicted Protein Size:	60 kDa
Gene Name:	chaperonin containing TCP1 subunit 8
Database Link:	NP_006576 Entrez Gene 12469 MouseEntrez Gene 288305 RatEntrez Gene 10694 Human P50990
Synonyms:	C21orf112; Cctq; D21S246; PRED71
Note:	Seq homology of immunogen across species: Chicken (90%), Rat (94%), Xenopus laevis (87%), Zebrafish (82%), Xenopus tropicalis (84%)
Protein Families:	Druggable Genome

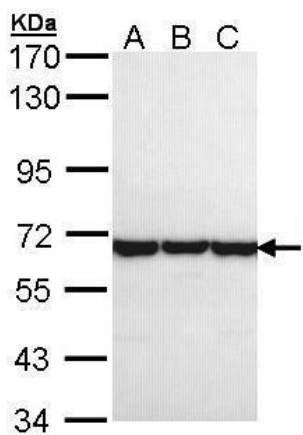


[View online »](#)

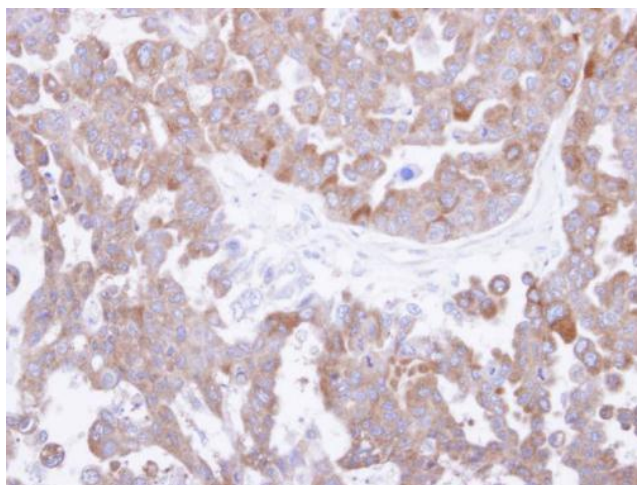
Product images:



Sample (50 ug of whole cell lysate). A: Mouse brain. 7.5% SDS PAGE. TA308295 diluted at 1:5000.



Sample (30 ug of whole cell lysate). A: A431. B: H1299. C: HeLa. 7.5% SDS PAGE. TA308295 diluted at 1:1000.



Immunohistochemical analysis of paraffin-embedded OVCAR3 xenograft, using TCP-1 theta (TA308295) antibody at 1:500 dilution.