

Product datasheet for **TA308294**

TOM1L2 Rabbit Polyclonal Antibody

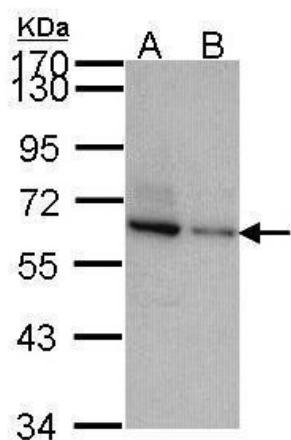
Product data:

Product Type:	Primary Antibodies
Applications:	WB
Recommended Dilution:	WB:1:500-1:3000
Reactivity:	Human (Predicted: Chicken, Rhesus Monkey, Mouse)
Host:	Rabbit
Isotype:	IgG
Clonality:	Polyclonal
Immunogen:	Synthetic peptide corresponding to a region within amino acids 444 and 507 of TOM1-like protein 2 (Uniprot ID#Q6ZVM7)
Formulation:	0.1M Tris, 0.1M Glycine, 10% Glycerol (pH7). 0.01% Thimerosal was added as a preservative.
Concentration:	lot specific
Purification:	Purified by antigen-affinity chromatography.
Conjugation:	Unconjugated
Storage:	Store at -20°C as received.
Stability:	Stable for 12 months from date of receipt.
Predicted Protein Size:	50 kDa
Gene Name:	target of myb1 like 2 membrane trafficking protein
Database Link:	NP_001028723 Entrez Gene 216810 Mouse Entrez Gene 146691 Human Q6ZVM7
Synonyms:	FLJ21501; FLJ32746
Note:	Seq homology of immunogen across species: Mouse (93%), Chicken (93%), Rhesus Monkey (100%)



[View online »](#)

Product images:



Sample (30 ug of whole cell lysate). A: JurKat. B: NT2D1. 7.5% SDS PAGE. TA308294 diluted at 1:1000.