

Product datasheet for **TA308288**

HCE (RNGTT) Rabbit Polyclonal Antibody

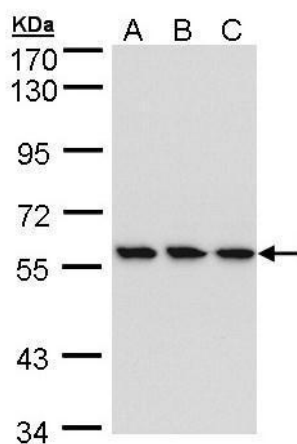
Product data:

Product Type:	Primary Antibodies
Applications:	WB
Recommended Dilution:	WB:1:500-1:3000
Reactivity:	Human (Predicted: Bovine)
Host:	Rabbit
Isotype:	IgG
Clonality:	Polyclonal
Immunogen:	Recombinant fragment corresponding to a region within amino acids 40 and 286 of HCE (Uniprot ID#O60942)
Formulation:	0.1M Tris, 0.1M Glycine, 10% Glycerol (pH7). 0.01% Thimerosal was added as a preservative.
Concentration:	lot specific
Purification:	Purified by antigen-affinity chromatography.
Conjugation:	Unconjugated
Storage:	Store at -20°C as received.
Stability:	Stable for 12 months from date of receipt.
Predicted Protein Size:	69 kDa
Gene Name:	RNA guanylyltransferase and 5'-phosphatase
Database Link:	NP_003791 Entrez Gene 8732 Human O60942
Synonyms:	CAP1A; hCAP; HCE; HCE1
Note:	Seq homology of immunogen across species: Bovine (100%)
Protein Families:	Druggable Genome, Phosphatase



[View online »](#)

Product images:



Sample (30 ug of whole cell lysate). A: HeLa. B: Hep G2. C: MOLT4. 7.5% SDS PAGE. TA308288 diluted at 1:1000