

Product datasheet for **TA308287**

Endomucin (EMCN) Rabbit Polyclonal Antibody

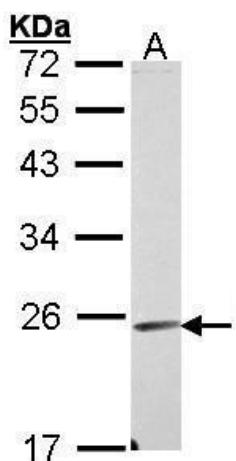
Product data:

Product Type:	Primary Antibodies
Applications:	IHC, WB
Recommended Dilution:	IHC:1:100-1:1000; WB:1:500-1:3000
Reactivity:	Human
Host:	Rabbit
Isotype:	IgG
Clonality:	Polyclonal
Immunogen:	Recombinant fragment corresponding to a region within amino acids 4 and 206 of Endomucin (Uniprot ID#Q9ULC0)
Formulation:	1XPBS, 40% Glycerol (pH7). 0.01% Thimerosal was added as a preservative.
Concentration:	lot specific
Purification:	Purified by antigen-affinity chromatography.
Conjugation:	Unconjugated
Storage:	Store at -20°C as received.
Stability:	Stable for 12 months from date of receipt.
Predicted Protein Size:	27 kDa
Gene Name:	endomucin
Database Link:	NP_057326 Entrez Gene 51705 Human Q9ULC0
Background:	EMCN is a mucin-like sialoglycoprotein that interferes with the assembly of focal adhesion complexes and inhibits interaction between cells and the extracellular matrix (Kinoshita et al., 2001 [PubMed 11418125]). [supplied by OMIM]
Synonyms:	EMCN2; MUC14
Protein Families:	Transmembrane

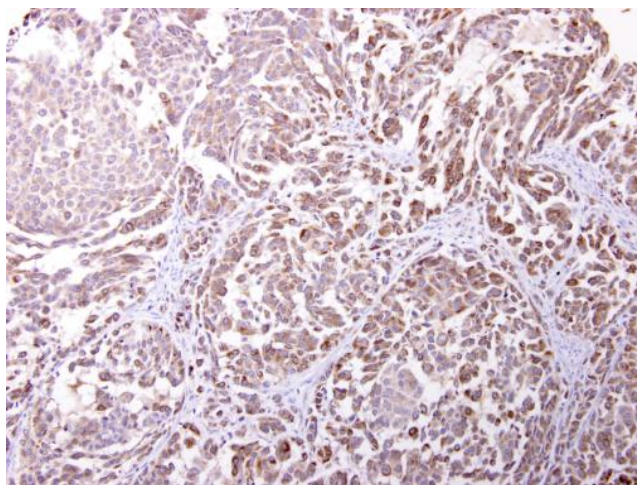


[View online »](#)

Product images:



Sample (30 ug of whole cell lysate). A: A431. 12% SDS PAGE. TA308287 diluted at 1:1000.



Endomucin antibody [N1C2] detects Endomucin protein at cytosol on human lung carcinoma by immunohistochemical analysis. Sample: Paraffin-embedded human lung carcinoma. Endomucin antibody [N1C2] (TA308287) dilution: 1:250.