

## Product datasheet for **TA308283**

### HPS6 Rabbit Polyclonal Antibody

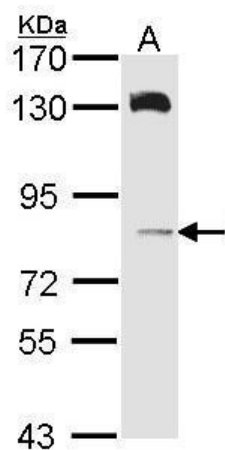
#### Product data:

Product Type:	Primary Antibodies
Applications:	WB
Recommended Dilution:	WB:1:500-1:3000
Reactivity:	Human (Predicted: Pig, Bovine, Rhesus Monkey)
Host:	Rabbit
Isotype:	IgG
Clonality:	Polyclonal
Immunogen:	Synthetic peptide corresponding to a region within amino acids 405 and 496 of HPS6 (Uniprot ID#Q86YV9)
Formulation:	0.1M Tris, 0.1M Glycine, 10% Glycerol (pH7). 0.01% Thimerosal was added as a preservative.
Concentration:	lot specific
Purification:	Purified by antigen-affinity chromatography.
Conjugation:	Unconjugated
Storage:	Store at -20°C as received.
Stability:	Stable for 12 months from date of receipt.
Predicted Protein Size:	83 kDa
Gene Name:	HPS6, biogenesis of lysosomal organelles complex 2 subunit 3
Database Link:	<a href="#">NP_079023</a> <a href="#">Entrez Gene 79803 Human</a> <a href="#">Q86YV9</a>
Background:	This intronless gene encodes a protein that may play a role in organelle biogenesis associated with melanosomes, platelet dense granules, and lysosomes. This protein interacts with Hermansky-Pudlak syndrome 5 protein. Mutations in this gene are associated with Hermansky-Pudlak syndrome type 6. [provided by RefSeq]
Synonyms:	BLOC2S3
Note:	Seq homology of immunogen across species: Pig (92%), Rhesus Monkey (100%), Bovine (91%)



[View online »](#)

## Product images:



Sample (30 ug of whole cell lysate). A: A431. 7.5% SDS PAGE. TA308283 diluted at 1:1000.