

Product datasheet for **TA308280**

SART1 Rabbit Polyclonal Antibody

Product data:

Product Type:	Primary Antibodies
Applications:	WB
Recommended Dilution:	WB:1:1000-1:10000
Reactivity:	Human (Predicted: Mouse, Rat, Xenopus, Zebrafish, Bovine)
Host:	Rabbit
Isotype:	IgG
Clonality:	Polyclonal
Immunogen:	Recombinant fragment corresponding to a region within amino acids 533 and 792 of SART1 (Uniprot ID#O43290)
Formulation:	0.1M Tris, 0.1M Glycine, 10% Glycerol (pH7). 0.01% Thimerosal was added as a preservative.
Concentration:	lot specific
Purification:	Purified by antigen-affinity chromatography.
Conjugation:	Unconjugated
Storage:	Store at -20°C as received.
Stability:	Stable for 12 months from date of receipt.
Predicted Protein Size:	90 kDa
Gene Name:	squamous cell carcinoma antigen recognized by T-cells 1
Database Link:	NP_005137 Entrez Gene 20227 Mouse Entrez Gene 29678 Rat Entrez Gene 9092 Human O43290



[View online »](#)

Background:

This gene encodes two proteins, the SART1(800) protein expressed in the nucleus of the majority of proliferating cells, and the SART1(259) protein expressed in the cytosol of epithelial cancers. The SART1(259) protein is translated by the mechanism of -1 frameshifting during posttranscriptional regulation; its full-length sequence is not published yet. The two encoded proteins are thought to be involved in the regulation of proliferation. Both proteins have tumor-rejection antigens. The SART1(259) protein possesses tumor epitopes capable of inducing HLA-A2402-restricted cytotoxic T lymphocytes in cancer patients. This SART1(259) antigen may be useful in specific immunotherapy for cancer patients and may serve as a paradigmatic tool for the diagnosis and treatment of patients with atopy. The SART1(259) protein is found to be essential for the recruitment of the tri-snRNP to the pre-spliceosome in the spliceosome assembly pathway. [provided by RefSeq]

Synonyms:

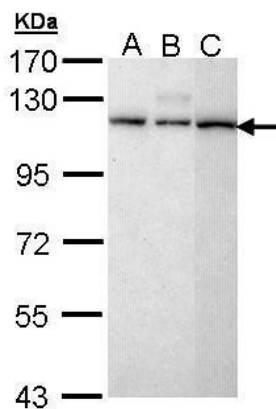
Ara1; HOMS1; SART1259; SNRNP110; Snu66

Note:

Seq homology of immunogen across species: Mouse (99%), Rat (99%), Xenopus laevis (89%), Zebrafish (81%), Bovine (99%)

Protein Pathways:

Spliceosome

Product images:

Sample (30 ug of whole cell lysate). A: H1299. B: HeLa. C: Molt-4. 7.5% SDS PAGE. TA308280 diluted at 1:5000.