

## Product datasheet for **TA308279**

### ICAM2 Rabbit Polyclonal Antibody

#### Product data:

Product Type:	Primary Antibodies
Applications:	IHC, WB
Recommended Dilution:	IHC:1:100-1:1000; WB:1:500-1:3000
Reactivity:	Human (Predicted: Monkey)
Host:	Rabbit
Isotype:	IgG
Clonality:	Polyclonal
Immunogen:	Recombinant fragment corresponding to a region within amino acids 1 and 189 of ICAM2 (Uniprot ID#P13598)
Formulation:	0.1M Tris, 0.1M Glycine, 10% Glycerol (pH7). 0.01% Thimerosal was added as a preservative.
Concentration:	lot specific
Purification:	Purified by antigen-affinity chromatography.
Conjugation:	Unconjugated
Storage:	Store at -20°C as received.
Stability:	Stable for 12 months from date of receipt.
Predicted Protein Size:	31 kDa
Gene Name:	intercellular adhesion molecule 2
Database Link:	<a href="#">NP_001093259</a> <a href="#">Entrez Gene 574158 Monkey</a> <a href="#">Entrez Gene 3384 Human</a> <a href="#">P13598</a>

**Background:** The protein encoded by this gene is a member of the intercellular adhesion molecule (ICAM) family. All ICAM proteins are type I transmembrane glycoproteins, contain 2-9 immunoglobulin-like C2-type domains, and bind to the leukocyte adhesion LFA-1 protein. This protein may play a role in lymphocyte recirculation by blocking LFA-1-dependent cell adhesion. It mediates adhesive interactions important for antigen-specific immune response, NK-cell mediated clearance, lymphocyte recirculation, and other cellular interactions important for immune response and surveillance. Several transcript variants encoding the same protein have been found for this gene. [provided by RefSeq]



[View online »](#)

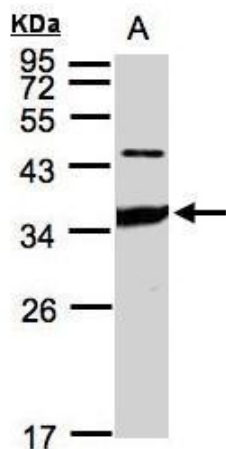
**Synonyms:** CD102

**Note:** Seq homology of immunogen across species: Monkey (85%)

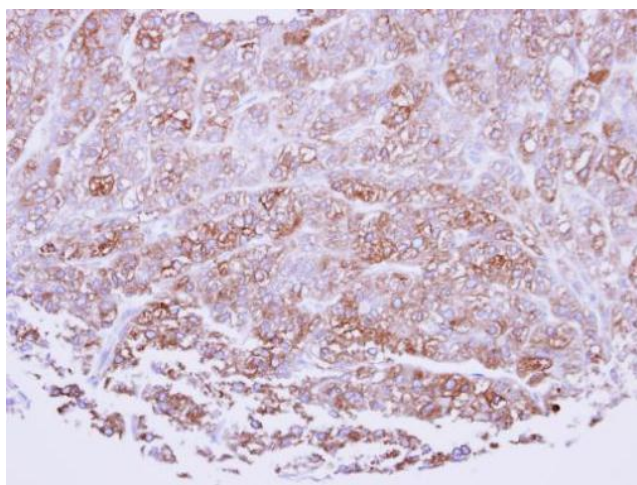
**Protein Families:** ES Cell Differentiation/IPS, Transmembrane

**Protein Pathways:** Cell adhesion molecules (CAMs), Natural killer cell mediated cytotoxicity

**Product images:**



Sample (30 ug whole cell lysate). A:HeLa S3. 12% SDS PAGE. TA308279 diluted at 1:1000



Immunohistochemical analysis of paraffin-embedded breast cancer, using ICAM2 (TA308279) antibody at 1:100 dilution.