

Product datasheet for **TA308278**

GADD45G Rabbit Polyclonal Antibody

Product data:

Product Type:	Primary Antibodies
Applications:	IF, WB
Recommended Dilution:	ICC/IF:1:100-1:1000; WB:1:500-1:3000
Reactivity:	Human (Predicted: Rat, Pig, Bovine, Rhesus Monkey, X. tropicalis, Mouse)
Host:	Rabbit
Isotype:	IgG
Clonality:	Polyclonal
Immunogen:	Synthetic peptide corresponding to a region within amino acids 96 and 159 of GADD45G (Uniprot ID#O95257)
Formulation:	0.1M Tris, 0.1M Glycine, 10% Glycerol (pH7). 0.01% Thimerosal was added as a preservative.
Concentration:	lot specific
Purification:	Purified by antigen-affinity chromatography.
Conjugation:	Unconjugated
Storage:	Store at -20°C as received.
Stability:	Stable for 12 months from date of receipt.
Predicted Protein Size:	17 kDa
Gene Name:	growth arrest and DNA damage inducible gamma
Database Link:	NP_006696 Entrez Gene 23882 Mouse Entrez Gene 291005 Rat Entrez Gene 10912 Human O95257
Background:	This gene is a member of a group of genes whose transcript levels are increased following stressful growth arrest conditions and treatment with DNA-damaging agents. The protein encoded by this gene responds to environmental stresses by mediating activation of the p38/JNK pathway via MTK1/MEKK4 kinase. The GADD45G is highly expressed in placenta. [provided by RefSeq]
Synonyms:	CR6; DDIT2; GADD45gamma; GRP17

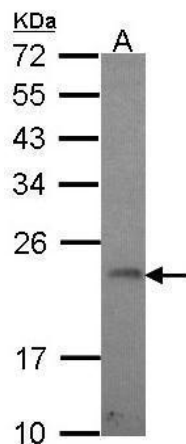


[View online »](#)

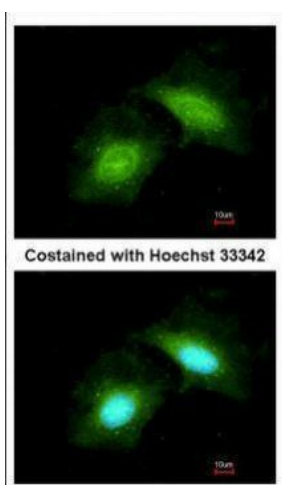
Note: Seq homology of immunogen across species: Mouse (93%), Rat (93%), Xenopus Tropicalis (86%), Pig (93%), Rhesus Monkey (100%), Bovine (93%)

Protein Pathways: Cell cycle, MAPK signaling pathway, p53 signaling pathway

Product images:



Sample (30 ug of whole cell lysate). A: HeLa. 12% SDS PAGE. TA308278 diluted at 1:1000.



Immunofluorescence analysis of methanol-fixed HeLa, using GADD45 gamma (TA308278) antibody at 1:200 dilution.