

## Product datasheet for **TA308277**

### EIF2B2 Rabbit Polyclonal Antibody

#### Product data:

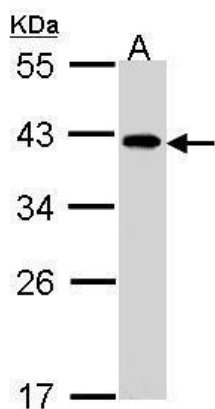
Product Type:	Primary Antibodies
Applications:	IHC, WB
Recommended Dilution:	IHC:1:100-1:1000; WB:1:500-1:3000
Reactivity:	Human (Predicted: Mouse, Chicken, Rabbit, Rat, Zebrafish, Bovine, X. tropicalis)
Host:	Rabbit
Isotype:	IgG
Clonality:	Polyclonal
Immunogen:	Recombinant fragment corresponding to a region within amino acids 88 and 323 of EIF2B beta (Uniprot ID#P49770)
Formulation:	0.1M Tris, 0.1M Glycine, 20% Glycerol (pH7). 0.01% Thimerosal was added as a preservative.
Concentration:	lot specific
Purification:	Purified by antigen-affinity chromatography.
Conjugation:	Unconjugated
Storage:	Store at -20°C as received.
Stability:	Stable for 12 months from date of receipt.
Predicted Protein Size:	39 kDa
Gene Name:	eukaryotic translation initiation factor 2B subunit beta
Database Link:	<a href="#">NP_055054</a> <a href="#">Entrez Gene 84005 Rat</a> <a href="#">Entrez Gene 217715 Mouse</a> <a href="#">Entrez Gene 8892 Human</a> <a href="#">P49770</a>
Background:	Eukaryotic initiation factor-2B (EIF2B) is a GTP exchange protein essential for protein synthesis. It consists of alpha (EIF2B1; MIM 606686), beta (EIF2B2), gamma (EIF2B3; MIM 606273), delta (EIF2B4; MIM 606687), and epsilon (EIF2B5; MIM 603945) subunits. EIF2B activates its EIF2 (see MIM 603907) substrate by exchanging EIF2-bound GDP for GTP. [supplied by OMIM]
Synonyms:	EIF-2Bbeta; EIF2B



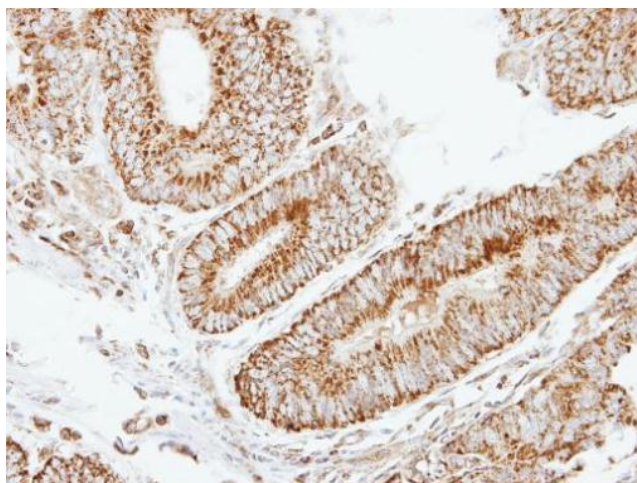
[View online »](#)

**Note:** Seq homology of immunogen across species: Mouse (96%), Chicken (90%), Rabbit (98%), Rat (94%), Zebrafish (85%), Bovine (98%), Xenopus tropicalis (87%)

**Product images:**



Sample (30 ug of whole cell lysate). A: A431. 10% SDS PAGE. TA308277 diluted at 1:1000.



Immunohistochemical analysis of paraffin-embedded Colon ca, using EIF2B beta (TA308277) antibody at 1:250 dilution.