

## Product datasheet for **TA308276**

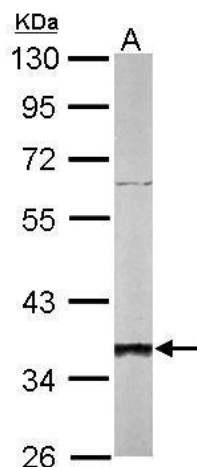
### SGTA Rabbit Polyclonal Antibody

#### Product data:

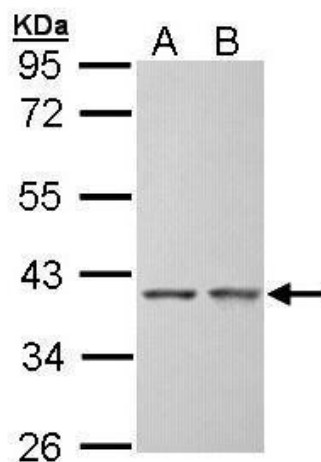
Product Type:	Primary Antibodies
Applications:	IHC, WB
Recommended Dilution:	IHC:1:100-1:1000; WB:1:1000-1:10000
Reactivity:	Human, Mouse (Predicted: Rhesus Monkey)
Host:	Rabbit
Isotype:	IgG
Clonality:	Polyclonal
Immunogen:	Recombinant fragment corresponding to a region within amino acids 6 and 313 of SGTA (Uniprot ID#O43765)
Formulation:	1XPBS, 20% Glycerol (pH7). 0.01% Thimerosal was added as a preservative.
Purification:	Purified by antigen-affinity chromatography.
Conjugation:	Unconjugated
Storage:	Store at -20°C as received.
Stability:	Stable for 12 months from date of receipt.
Predicted Protein Size:	34 kDa
Gene Name:	small glutamine rich tetratricopeptide repeat containing alpha
Database Link:	<a href="#">NP_003012</a> <a href="#">Entrez Gene 52551 Mouse</a> <a href="#">Entrez Gene 6449 Human</a> <a href="#">O43765</a>
Background:	This gene encodes a protein which is capable of interacting with the major nonstructural protein of parvovirus H-1 and 70-kDa heat shock cognate protein; however, its function is not known. Since this transcript is expressed ubiquitously in various tissues, this protein may serve a housekeeping function. [provided by RefSeq]
Synonyms:	alphaSGT; hSGT; SGT
Note:	Seq homology of immunogen across species: Rhesus Monkey (100%)
Protein Families:	Druggable Genome



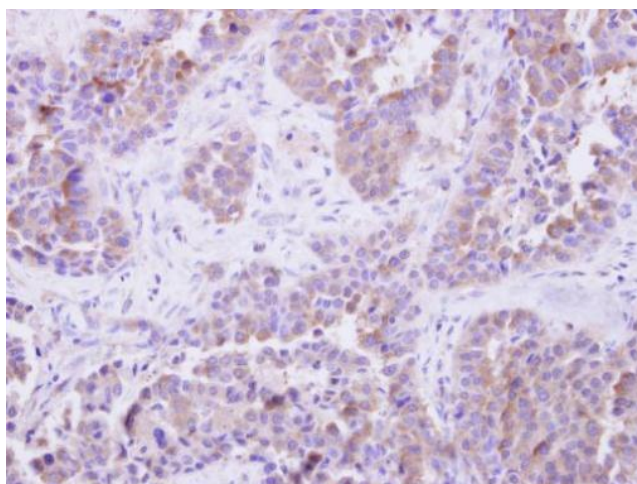
[View online »](#)

**Product images:**


Sample (50 ug of whole cell lysate). A: mouse liver. 10% SDS PAGE. TA308276 diluted at 1:1000.



Sample (30 ug of whole cell lysate). A: Hep G2. B: Molt-4. 10% SDS PAGE. TA308276 diluted at 1:5000.



SGTA antibody detects SGTA protein at cytosol on Lung adenocarcinoma by immunohistochemical analysis. Sample: Paraffin-embedded Lung adenocarcinoma. SGTA antibody (TA308276) dilution: 1:500.

