

Product datasheet for **TA308275**

Flightless I (FLII) Rabbit Polyclonal Antibody

Product data:

Product Type:	Primary Antibodies
Applications:	IF, WB
Recommended Dilution:	ICC/IF:1:100-1:1000; WB:1:500-1:3000
Reactivity:	Human, Mouse (Predicted: Chicken, Rat, X. tropicalis)
Host:	Rabbit
Isotype:	IgG
Clonality:	Polyclonal
Immunogen:	Recombinant fragment corresponding to a region within amino acids 435 and 778 of Flightless I (Uniprot ID#Q13045)
Formulation:	0.1M Tris, 0.1M Glycine, 10% Glycerol (pH7). 0.01% Thimerosal was added as a preservative.
Concentration:	lot specific
Purification:	Purified by antigen-affinity chromatography.
Conjugation:	Unconjugated
Storage:	Store at -20°C as received.
Stability:	Stable for 12 months from date of receipt.
Predicted Protein Size:	145 kDa
Gene Name:	FLII, actin remodeling protein
Database Link:	NP_002009 Entrez Gene 14248 MouseEntrez Gene 287375 RatEntrez Gene 2314 Human Q13045
Background:	This gene encodes a protein with a gelsolin-like actin binding domain and an N-terminal leucine-rich repeat-protein protein interaction domain. The protein is similar to a Drosophila protein involved in early embryogenesis and the structural organization of indirect flight muscle. The gene is located within the Smith-Magenis syndrome region on chromosome 17. [provided by RefSeq]
Synonyms:	FLI; Fli1; FLIL

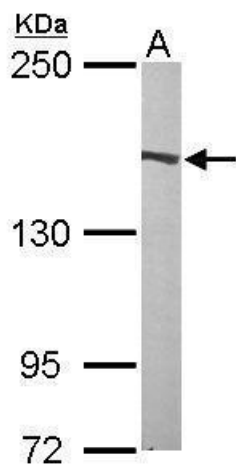


[View online »](#)

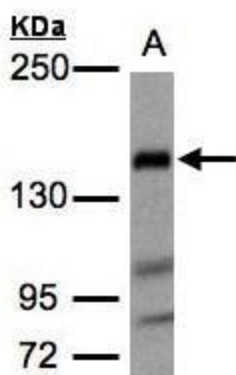
Note: Seq homology of immunogen across species: Chicken (87%), Rat (96%), Xenopus tropicalis (81%)

Protein Families: ES Cell Differentiation/IPS, Transcription Factors

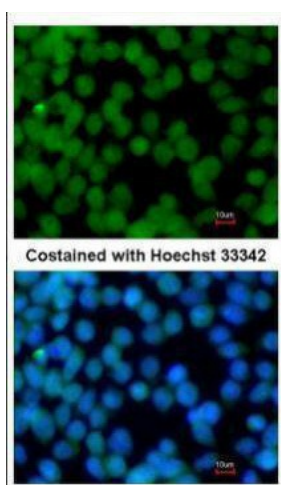
Product images:



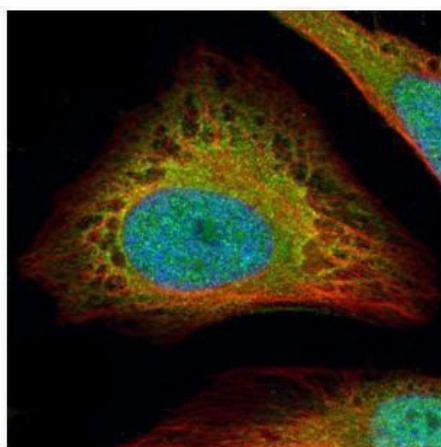
Sample (50 ug of whole cell lysate). A: Mouse brain. 5% SDS PAGE. TA308275 diluted at 1:1000.



Sample (30 ug whole cell lysate). A:Raji. 5% SDS PAGE. TA308275 diluted at 1:1000



Immunofluorescence analysis of paraformaldehyde-fixed mouse ESC D3, using Flightless I (TA308275) antibody at 1:200 dilution.



Confocal immunofluorescence analysis (Olympus FV10i) of paraformaldehyde-fixed HeLa, using Flightless I (TA308275) antibody (Green) at 1:500 dilution. Alpha-tubulin filaments were labeled with anti-alpha tubulin antibody (Red) at 1:2000.