

## Product datasheet for **TA308274**

### Plexin D1 (PLXND1) Rabbit Polyclonal Antibody

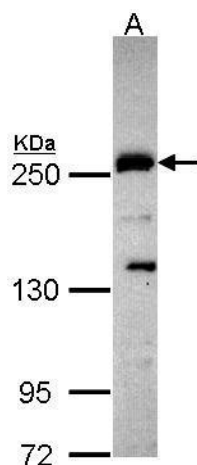
#### Product data:

Product Type:	Primary Antibodies
Applications:	IF, WB
Recommended Dilution:	ICC/IF:1:100-1:1000; WB:1:500-1:3000
Reactivity:	Human (Predicted: Mouse, Rat)
Host:	Rabbit
Isotype:	IgG
Clonality:	Polyclonal
Immunogen:	Synthetic peptide corresponding to a region within amino acids 1633 and 1724 of Plexin D1 (Uniprot ID#Q9Y4D7)
Formulation:	1XPBS, 20% Glycerol (pH7). 0.025% ProClin 300 was added as a preservative.
Concentration:	lot specific
Purification:	Purified by antigen-affinity chromatography.
Conjugation:	Unconjugated
Storage:	Store at -20°C as received.
Stability:	Stable for 12 months from date of receipt.
Predicted Protein Size:	212 kDa
Gene Name:	plexin D1
Database Link:	<a href="#">NP_055918</a> <a href="#">Entrez Gene 67784 Mouse</a> <a href="#">Entrez Gene 312652 Rat</a> <a href="#">Entrez Gene 23129 Human</a> <a href="#">Q9Y4D7</a>
Synonyms:	PLEXD1
Note:	Seq homology of immunogen across species: Mouse (92%), Rat (92%)
Protein Families:	Druggable Genome, Transmembrane

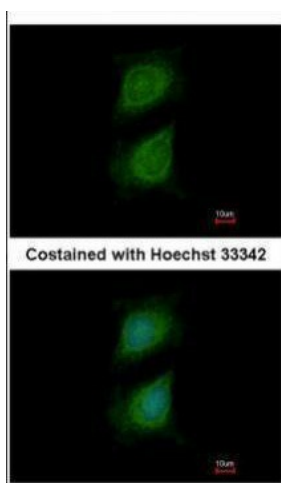


[View online »](#)

## Product images:



Sample (30 ug of whole cell lysate). A: Hep G2. 5% SDS PAGE. TA308274 diluted at 1:1000.



Immunofluorescence analysis of methanol-fixed HeLa, using Plexin D1 (TA308274) antibody at 1:500 dilution.