

Product datasheet for **TA308273**

SCAP2 (SKAP2) Rabbit Polyclonal Antibody

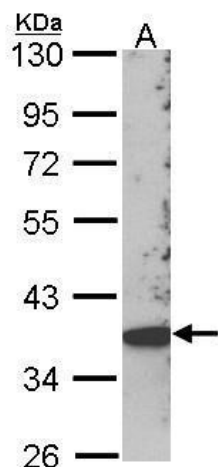
Product data:

Product Type:	Primary Antibodies
Applications:	IF, IHC, WB
Recommended Dilution:	ICC/IF:1:100-1:1000; IHC:1:100-1:1000; WB:1:500-1:3000
Reactivity:	Human (Predicted: Rat, Bovine, Rhesus Monkey, X. tropicalis, Mouse)
Host:	Rabbit
Isotype:	IgG
Clonality:	Polyclonal
Immunogen:	Synthetic peptide corresponding to a region within amino acids 296 and 359 of SCAP2 (Uniprot ID#O75563)
Formulation:	1XPBS, 10% Glycerol (pH7). 0.01% Thimerosal was added as a preservative.
Concentration:	lot specific
Purification:	Purified by antigen-affinity chromatography.
Conjugation:	Unconjugated
Storage:	Store at -20°C as received.
Stability:	Stable for 12 months from date of receipt.
Predicted Protein Size:	41 kDa
Gene Name:	src kinase associated phosphoprotein 2
Database Link:	NP_003921 Entrez Gene 54353 MouseEntrez Gene 155183 RatEntrez Gene 8935 Human O75563
Background:	The protein encoded by this gene belongs to the src family kinases. This protein is similar to the src kinase associated phosphoprotein 1. It is an adaptor protein that is thought to play an essential role in the src signaling pathway in various cells. It inhibits PTK2B/RAFTK activity and regulates alpha-synuclein phosphorylation. [provided by RefSeq]
Synonyms:	PRAP; RA70; SAPS; SCAP2; SKAP-HOM; SKAP55R
Note:	Seq homology of immunogen across species: Mouse (93%), Rat (93%), Xenopus Tropicalis (100%), Rhesus Monkey (100%), Bovine (93%)

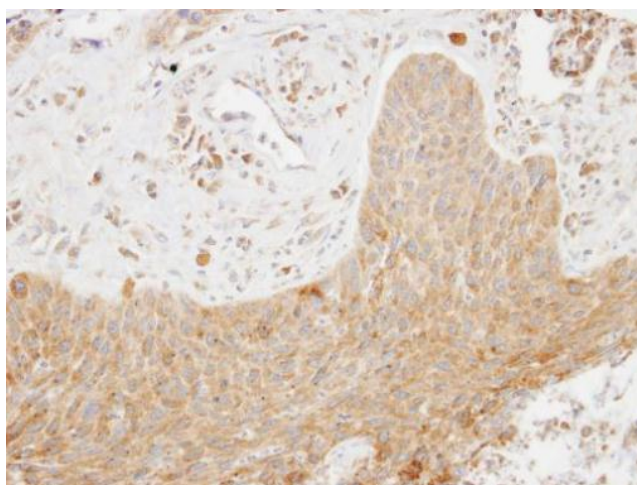


[View online »](#)

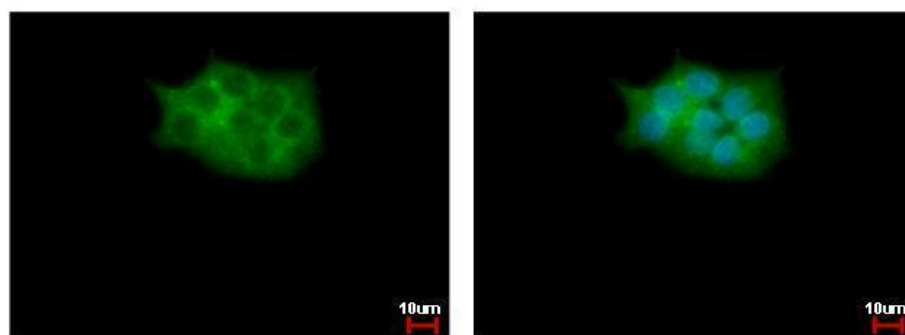
Product images:



Sample (30 ug of whole cell lysate). A: Hep G2. 10% SDS PAGE. SCAP2 antibody. TA308273 diluted at 1:1000.



Immunohistochemical analysis of paraffin-embedded lung ca, using SCAP2 (TA308273) antibody at 1:100 dilution.



SCAP2 antibody [C2C3], C-term detects SKAP2 protein at cytoplasm by immunofluorescent analysis. Sample: HepG2 cells were fixed in 4% paraformaldehyde at RT for 15 min. Green: SKAP2 protein stained by SCAP2 antibody [C2C3], C-term (TA308273) diluted at 1:5