

## Product datasheet for **TA308272**

### CHMP5 Rabbit Polyclonal Antibody

#### Product data:

Product Type:	Primary Antibodies
Applications:	IF, IHC, WB
Recommended Dilution:	ICC/IF:1:100-1:1000; IHC:1:100-1:1000; WB:1:500-1:3000
Reactivity:	Human, Mouse (Predicted: Pig, Bovine, Rhesus Monkey)
Host:	Rabbit
Isotype:	IgG
Clonality:	Polyclonal
Immunogen:	Recombinant fragment corresponding to a region within amino acids 1 and 202 of CHMP5 (Uniprot ID#Q9NZZ3)
Formulation:	0.1M Tris, 0.1M Glycine, 10% Glycerol (pH7). 0.01% Thimerosal was added as a preservative.
Concentration:	lot specific
Purification:	Purified by antigen-affinity chromatography.
Conjugation:	Unconjugated
Storage:	Store at -20°C as received.
Stability:	Stable for 12 months from date of receipt.
Predicted Protein Size:	25 kDa
Gene Name:	charged multivesicular body protein 5
Database Link:	<a href="#">NP_057494</a> <a href="#">Entrez Gene 76959 Mouse</a> <a href="#">Entrez Gene 51510 Human</a> <a href="#">Q9NZZ3</a>
Background:	CHMP5 belongs to the chromatin-modifying protein/charged multivesicular body protein (CHMP) family. These proteins are components of ESCRT-III (endosomal sorting complex required for transport III), a complex involved in degradation of surface receptor proteins and formation of endocytic multivesicular bodies (MVBs). Some CHMPs have both nuclear and cytoplasmic/vesicular distributions, and one such CHMP, CHMP1A (MIM 164010), is required for both MVB formation and regulation of cell cycle progression (Tsang et al., 2006 [PubMed 16730941]). [supplied by OMIM]
Synonyms:	C9orf83; CGI-34; HSPC177; PNAS-2; SNF7DC2; Vps60

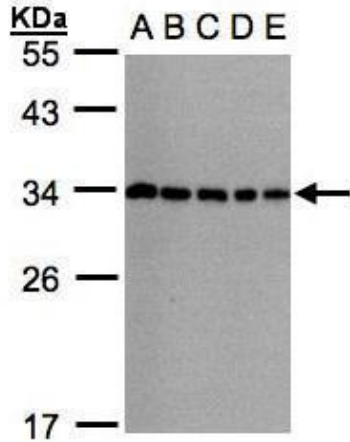


[View online »](#)

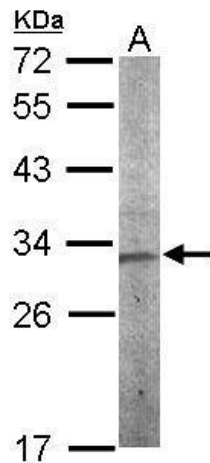
**Note:** Seq homology of immunogen across species: Pig (100%), Rhesus Monkey (100%), Bovine (100%)

**Protein Pathways:** Endocytosis

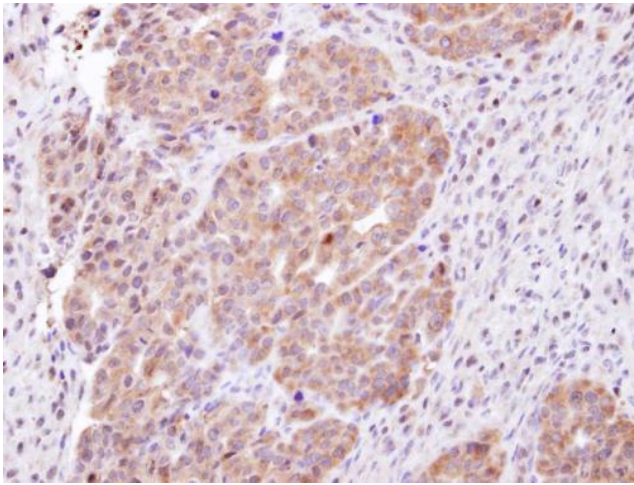
**Product images:**



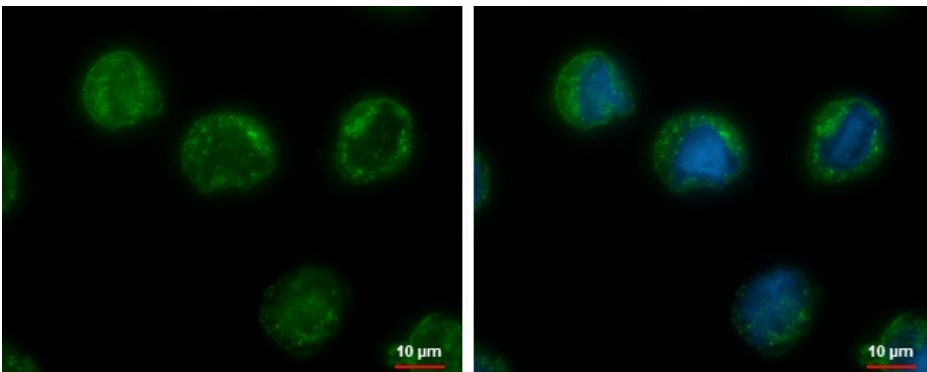
Sample (30ug whole cell lysate). A: 293T. B: A431. C: H1299. D: HeLa S3. E: Hep G2. 12% SDS PAGE. TA308272 diluted at 1:1000



Sample (50 ug of whole cell lysate). A: mouse stomach. 12% SDS PAGE. TA308272 diluted at 1:1000.



Immunohistochemical analysis of paraffin-embedded NCIN87 xenograft, using CHMP5 (TA308272) antibody at 1:100 dilution.



CHMP5 antibody [N1C3] detects CHMP5 protein at cytoplasm by immunofluorescent analysis. Sample: HL-60 cells were fixed in ice-cold MeOH for 5 min. Green: CHMP5 protein stained by CHMP5 antibody [N1C3] (TA308272) diluted at 1:500. Blue: Hoechst 33342 stain