

Product datasheet for **TA308270**

EPM2AIP1 Rabbit Polyclonal Antibody

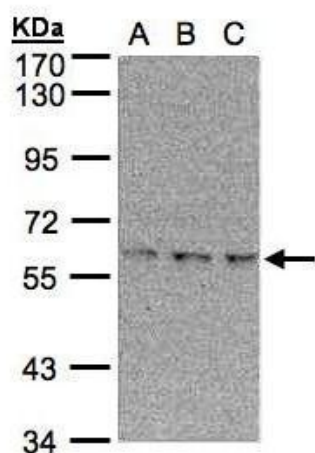
Product data:

Product Type:	Primary Antibodies
Applications:	WB
Recommended Dilution:	WB:1:500-1:3000
Reactivity:	Human (Predicted: Mouse, Rat)
Host:	Rabbit
Isotype:	IgG
Clonality:	Polyclonal
Immunogen:	Synthetic peptide corresponding to a region within amino acids 1 and 43 of EPM2AIP1 (Uniprot ID#Q7L775)
Formulation:	0.1M Tris, 0.1M Glycine, 10% Glycerol (pH7). 0.01% Thimerosal was added as a preservative.
Concentration:	lot specific
Purification:	Purified by antigen-affinity chromatography.
Conjugation:	Unconjugated
Storage:	Store at -20°C as received.
Stability:	Stable for 12 months from date of receipt.
Predicted Protein Size:	70 kDa
Gene Name:	EPM2A (laforin) interacting protein 1
Database Link:	NP_055620 Entrez Gene 77781 MouseEntrez Gene 316021 RatEntrez Gene 9852 Human Q7L775
Background:	The EPM2A gene, which encodes laforin, is mutated in an autosomal recessive form of adolescent progressive myoclonus epilepsy. The protein encoded by this gene binds to laforin, but its function is not known. This gene is intronless. [provided by RefSeq]
Synonyms:	FLJ11207; KIAA0766
Note:	Seq homology of immunogen across species: Mouse (83%), Rat (83%)



[View online »](#)

Product images:



Sample (30 ug of whole cell lysate). A:293T.
B:A431. C:H1299. 7.5% SDS PAGE. TA308270
diluted at 1:500