

## Product datasheet for **TA308269**

### **SERPINA6 Rabbit Polyclonal Antibody**

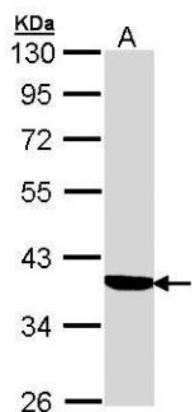
#### **Product data:**

<b>Product Type:</b>	Primary Antibodies
<b>Applications:</b>	IF, WB
<b>Recommended Dilution:</b>	ICC/IF:1:100-1:1000; WB:1:500-1:3000
<b>Reactivity:</b>	Human
<b>Host:</b>	Rabbit
<b>Isotype:</b>	IgG
<b>Clonality:</b>	Polyclonal
<b>Immunogen:</b>	Recombinant protein fragment contain a sequence corresponding to a region within amino acids 105 and 353 of Cortisol Binding Globulin
<b>Formulation:</b>	0.1M Tris, 0.1M Glycine, 10% Glycerol (pH7). 0.01% Thimerosal was added as a preservative.
<b>Concentration:</b>	lot specific
<b>Purification:</b>	Purified by antigen-affinity chromatography.
<b>Conjugation:</b>	Unconjugated
<b>Storage:</b>	Store at -20°C as received.
<b>Stability:</b>	Stable for 12 months from date of receipt.
<b>Predicted Protein Size:</b>	45 kDa
<b>Gene Name:</b>	serpin family A member 6
<b>Database Link:</b>	<a href="#">NP_001747</a> <a href="#">Entrez Gene 866 Human</a> <a href="#">P08185</a>
<b>Background:</b>	This gene encodes an alpha-globulin protein with corticosteroid-binding properties. This is the major transport protein for glucocorticoids and progestins in the blood of most vertebrates. The gene localizes to a chromosomal region containing several closely related serine protease inhibitors which may have evolved by duplication events. [provided by RefSeq]
<b>Synonyms:</b>	CBG
<b>Protein Families:</b>	Druggable Genome, Secreted Protein

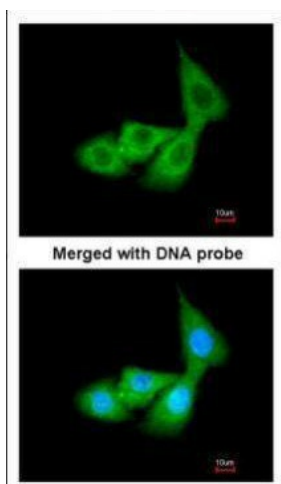


[View online »](#)

## Product images:



Sample (30 ug of whole cell lysate). A: A431. 10% SDS PAGE. TA308269 diluted at 1:1000.



Immunofluorescence analysis of paraformaldehyde-fixed A549, using Cortisol Binding Globulin (TA308269) antibody at 1:200 dilution.