

Product datasheet for **TA308268**

MAP2K1IP1 (LAMTOR3) Rabbit Polyclonal Antibody

Product data:

| | |
|-------------------------|--|
| Product Type: | Primary Antibodies |
| Applications: | IHC, WB |
| Recommended Dilution: | WB:1:500-1:3000 |
| Reactivity: | Human (Predicted: Mouse, Bovine, X. tropicalis) |
| Host: | Rabbit |
| Isotype: | IgG |
| Clonality: | Polyclonal |
| Immunogen: | Recombinant fragment corresponding to a region within amino acids 1 and 124 of MP1 (Uniprot ID#Q9UHA4) |
| Formulation: | 0.1M Tris, 0.1M Glycine, 10% Glycerol (pH7). 0.01% Thimerosal was added as a preservative. |
| Concentration: | lot specific |
| Purification: | Purified by antigen-affinity chromatography. |
| Conjugation: | Unconjugated |
| Storage: | Store at -20°C as received. |
| Stability: | Stable for 12 months from date of receipt. |
| Predicted Protein Size: | 14 kDa |
| Gene Name: | late endosomal/lysosomal adaptor, MAPK and MTOR activator 3 |
| Database Link: | NP_068805 Entrez Gene 56692 Mouse Entrez Gene 8649 Human Q9UHA4 |
| Background: | This gene encodes a scaffold protein that functions in the extracellular signal-regulated kinase (ERK) cascade. The protein is localized to late endosomes by the mitogen-activated protein-binding protein-interacting protein, and binds specifically to MAP kinase kinase MAP2K1/MEK1, MAP kinase MAPK3/ERK1, and MAP kinase MAPK1/ERK2. Studies of the orthologous gene in mouse indicate that it regulates late endosomal traffic and cell proliferation. Multiple transcript variants are expressed by this gene, but only one variant is thought to express a protein. [provided by RefSeq] |
| Synonyms: | MAP2K1IP1; MAPBP; MAPKSP1; MP1; PRO0633; Ragulator3 |



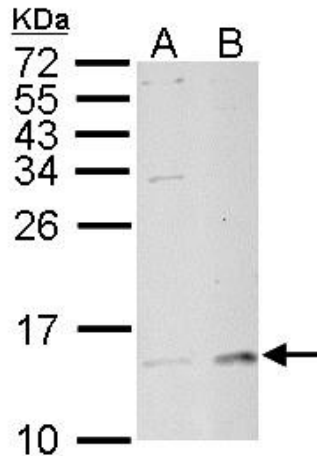
[View online »](#)

Note: Seq homology of immunogen across species: Mouse (97%), Bovine (99%), Xenopus tropicalis (85%)

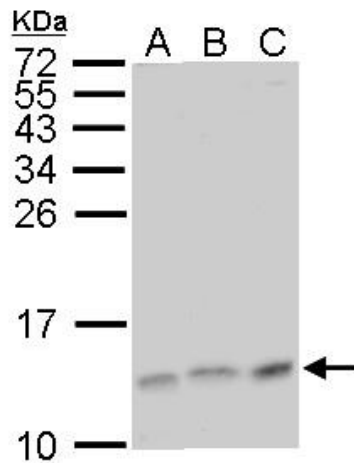
Protein Families: Druggable Genome

Protein Pathways: MAPK signaling pathway

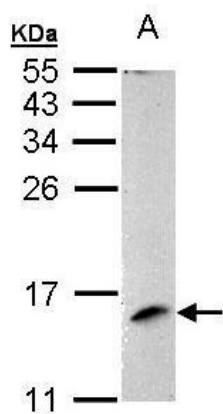
Product images:



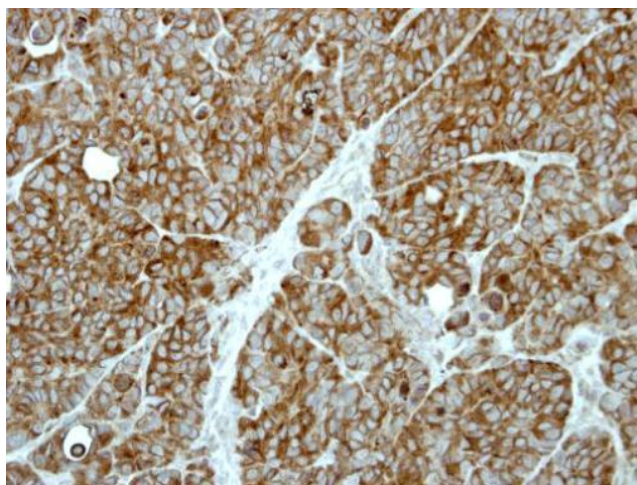
MP1 antibody detects MP1 protein by Western blot analysis. A. 30 ug Rat2 whole cell lysate/extract. 15 % SDS-PAGE. MP1 antibody (TA308268) dilution: 1:1000



MP1 antibody detects MP1 protein by Western blot analysis. A. 30 ug Neuro2A whole cell lysate/extract. B. 30 ug Raw264.7 whole cell lysate/extract. C. 30 ug C2C12 whole cell lysate/extract. 15 % SDS-PAGE. MP1 antibody (TA308268) dilution: 1:1000



Sample (30 ug of whole cell lysate). A: 293T. 15% SDS PAGE. TA308268 diluted at 1:1000.



Immunohistochemical analysis of paraffin-embedded SW480 xenograft, using MP1 (TA308268) antibody at 1:500 dilution.