

## Product datasheet for **TA308267**

### **NKG2D (KLRK1) Rabbit Polyclonal Antibody**

#### **Product data:**

|                                |   |
|--------------------------------|---|
| <b>Product Type:</b>           | Primary Antibodies  |
| <b>Applications:</b>           | IHC   |
| <b>Recommended Dilution:</b>   | IHC:1:100-1:1000  |
| <b>Reactivity:</b>             | Human   |
| <b>Host:</b>                   | Rabbit  |
| <b>Isotype:</b>                | IgG   |
| <b>Clonality:</b>              | Polyclonal  |
| <b>Immunogen:</b>              | Synthetic peptide corresponding to a region within amino acids 86 and 177 of NKG2D  |
| <b>Formulation:</b>            | 0.1M Tris, 0.1M Glycine, 20% Glycerol (pH7). 0.01% Thimerosal was added as a preservative.  |
| <b>Concentration:</b>          | lot specific  |
| <b>Purification:</b>           | Purified by antigen-affinity chromatography.  |
| <b>Conjugation:</b>            | Unconjugated  |
| <b>Storage:</b>                | Store at -20°C as received.   |
| <b>Stability:</b>              | Stable for 12 months from date of receipt.  |
| <b>Predicted Protein Size:</b> | 25 kDa  |
| <b>Gene Name:</b>              | killer cell lectin like receptor K1   |
| <b>Database Link:</b>          | <a href="#">NP_031386</a><br><a href="#">Entrez Gene 22914 Human</a><br><a href="#">P26718</a>  |
| <b>Background:</b>             | Natural killer (NK) cells are lymphocytes that can mediate lysis of certain tumor cells and virus-infected cells without previous activation. They can also regulate specific humoral and cell-mediated immunity. NK cells preferentially express several calcium-dependent (C-type) lectins, which have been implicated in the regulation of NK cell function. This gene encodes a member of the NKG2 family, and the encoded transmembrane protein is characterized by a type II membrane orientation (extracellular C terminus) and the presence of a C-type lectin domain. The NKG2 gene family is located within the NK complex, a region that contains several C-type lectin genes preferentially expressed in NK cells. [provided by RefSeq] |
| <b>Synonyms:</b>               | CD314; D12S2489E; KLR; NKG2-D; NKG2D  |

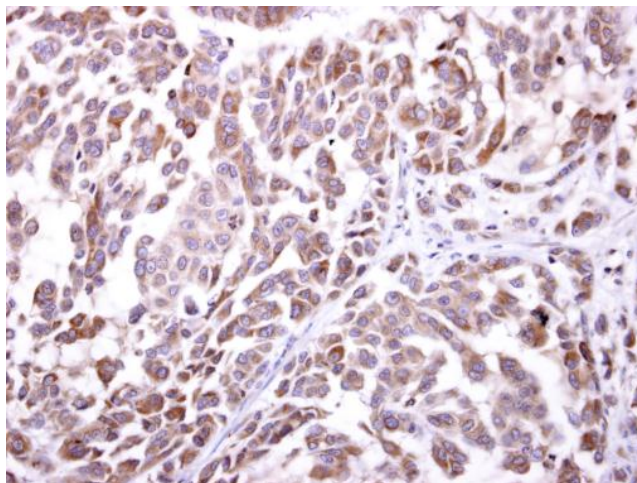


[View online »](#)

Protein Families: Transmembrane

Protein Pathways: Natural killer cell mediated cytotoxicity

**Product images:**



NKG2D antibody [N3C2], Internal detects NKG2D protein at cytosol on human lung carcinoma by immunohistochemical analysis. Sample: Paraffin-embedded human lung carcinoma. NKG2D antibody [N3C2], Internal (TA308267) dilution: 1:250.