

## Product datasheet for **TA308266**

### LHCGR Rabbit Polyclonal Antibody

#### Product data:

Product Type:	Primary Antibodies
Applications:	IHC, WB
Recommended Dilution:	IHC:1:100-1:1000; WB:1:500-1:3000
Reactivity:	Human (Predicted: Rat)
Host:	Rabbit
Isotype:	IgG
Clonality:	Polyclonal
Immunogen:	Synthetic peptide corresponding to a region within amino acids 622 and 699 of LHR (Uniprot ID#P22888)
Formulation:	1XPBS, 20% Glycerol (pH7). 0.01% Thimerosal was added as a preservative.
Concentration:	lot specific
Purification:	Purified by antigen-affinity chromatography.
Conjugation:	Unconjugated
Storage:	Store at -20°C as received.
Stability:	Stable for 12 months from date of receipt.
Predicted Protein Size:	79 kDa
Gene Name:	luteinizing hormone/choriogonadotropin receptor
Database Link:	<a href="#">NP_000224</a> <a href="#">Entrez Gene 25477 Rat</a> <a href="#">Entrez Gene 3973 Human</a> <a href="#">P22888</a>
Background:	This gene encodes the receptor for both luteinizing hormone and choriogonadotropin. This receptor belongs to the G-protein coupled receptor 1 family, and its activity is mediated by G proteins which activate adenylate cyclase. Mutations in this gene result in disorders of male secondary sexual character development, including familial male precocious puberty, also known as testotoxicosis, hypogonadotropic hypogonadism, Leydig cell adenoma with precocious puberty, and male pseudohermaphroditism with Leydig cell hypoplasia. [provided by RefSeq]
Synonyms:	CG-R; CGR; HHG; LCGR; LGR2; LH; LHR; LHRHR; LSH-R; ULG5



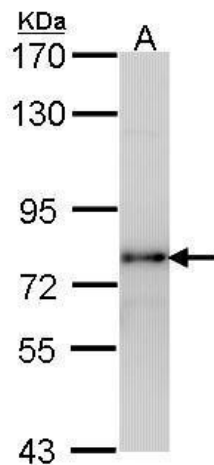
[View online »](#)

**Note:** Seq homology of immunogen across species: Rat (85%)

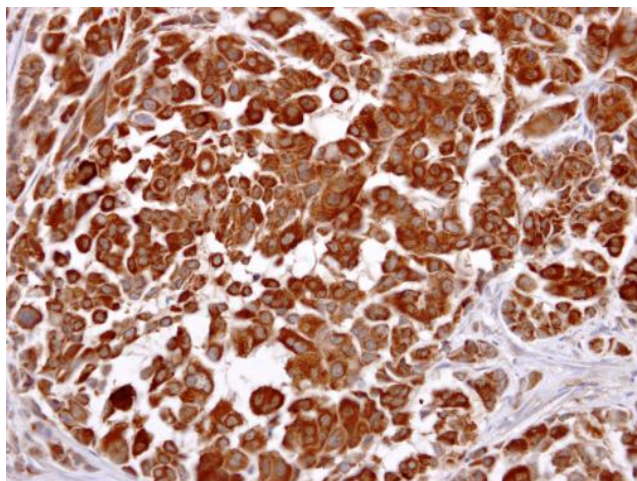
**Protein Families:** Druggable Genome, Transmembrane

**Protein Pathways:** Calcium signaling pathway, Neuroactive ligand-receptor interaction

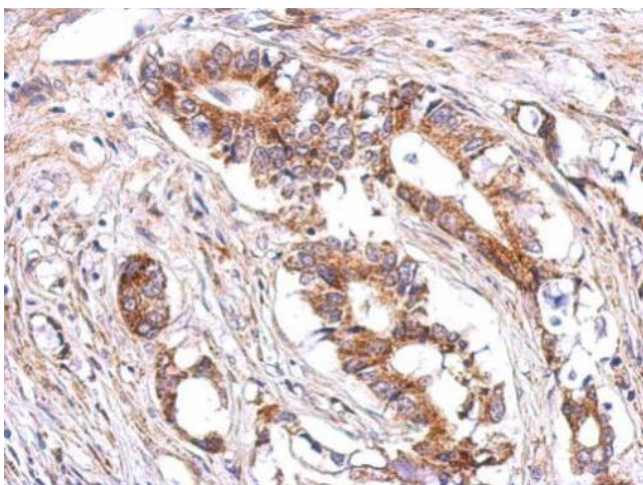
**Product images:**



Sample (30 ug of whole cell lysate). A: H1299.  
7.5% SDS PAGE. LHR antibody. TA308266 diluted at 1:1000.



LHR antibody [C3], C-term detects LHR protein at cytosol on human lung carcinoma by immunohistochemical analysis. Sample: LHR antibody [C3], C-term (TA308266) dilution: 1:250.



Immunohistochemical analysis of paraffin-embedded Gastric ca, using LHR (TA308266) antibody at 1:500 dilution.