

Product datasheet for **TA308265**

Citrate synthetase (CS) Rabbit Polyclonal Antibody

Product data:

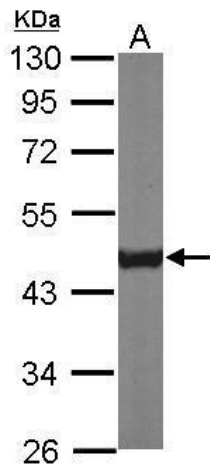
Product Type:	Primary Antibodies
Applications:	IF, IHC, WB
Recommended Dilution:	ICC/IF:1:100-1:1000; IHC:1:100-1:1000; WB:1:500-1:3000
Reactivity:	Human, Mouse (Predicted: Pig, Rat, Xenopus, Zebrafish, Bovine, X. tropicalis)
Host:	Rabbit
Isotype:	IgG
Clonality:	Polyclonal
Immunogen:	Recombinant fragment corresponding to a region within amino acids 110 and 412 of Citrate synthetase (Uniprot ID#O75390)
Formulation:	1XPBS, 20% Glycerol (pH7). 0.025% ProClin 300 was added as a preservative.
Concentration:	lot specific
Purification:	Purified by antigen-affinity chromatography.
Conjugation:	Unconjugated
Storage:	Store at -20°C as received.
Stability:	Stable for 12 months from date of receipt.
Predicted Protein Size:	45 kDa
Gene Name:	citrate synthase
Database Link:	NP_938083 Entrez Gene 12974 MouseEntrez Gene 170587 RatEntrez Gene 1431 Human O75390
Background:	The protein encoded by this gene is a Krebs tricarboxylic acid cycle enzyme that catalyzes the synthesis of citrate from oxaloacetate and acetyl coenzyme A. The enzyme is found in nearly all cells capable of oxidative metabolism. This protein is nuclear encoded and transported into the mitochondrial matrix, where the mature form is found. [provided by RefSeq]
Synonyms:	citrate synthase; mitochondrial
Note:	Seq homology of immunogen across species: Pig (95%), Rat (93%), Xenopus laevis (91%), Zebrafish (90%), Bovine (95%), Xenopus tropicalis (93%)



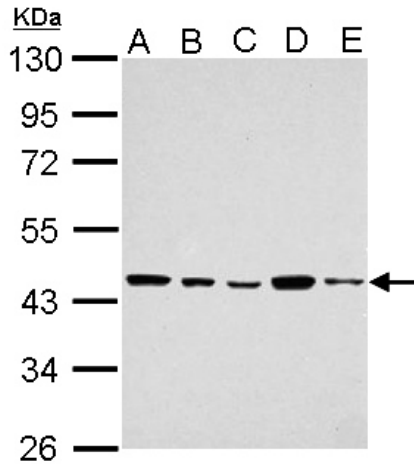
[View online >](#)

Protein Pathways: Citrate cycle (TCA cycle), Glyoxylate and dicarboxylate metabolism, Metabolic pathways

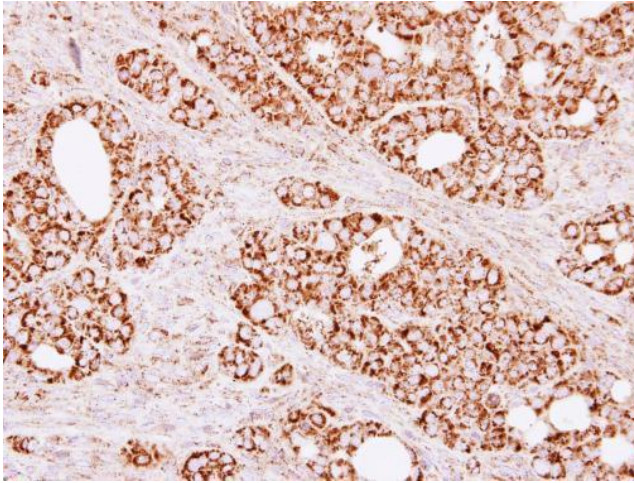
Product images:



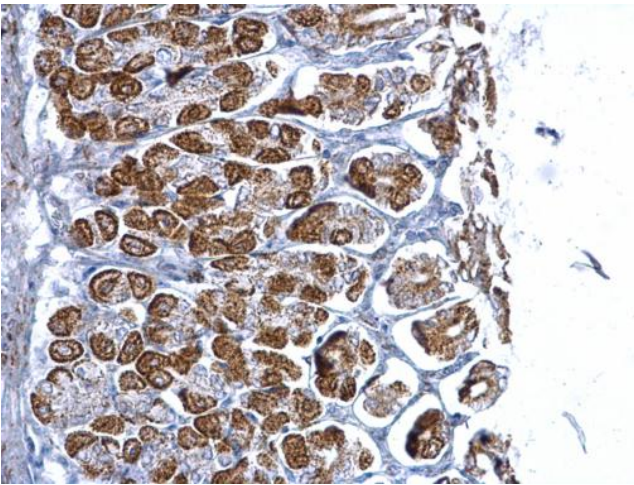
Sample (50 ug of whole cell lysate). A: Mouse brain. 10% SDS PAGE. TA308265 diluted at 1:1000.



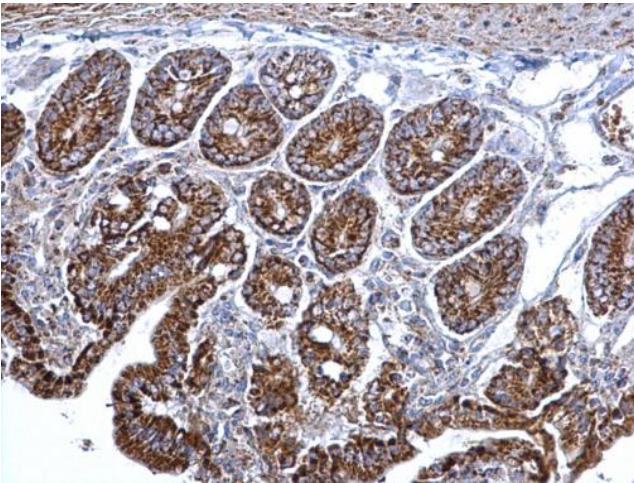
Citrate synthetase antibody [N2C3] detects Citrate synthetase protein by western blot analysis. A. 30 ug 293T whole cell lysate/extract. B. 30 ug A431 whole cell lysate/extract. C. 30 ug HeLa whole cell lysate/extract. D. 30 ug HepG2 whole cell lysate/ext



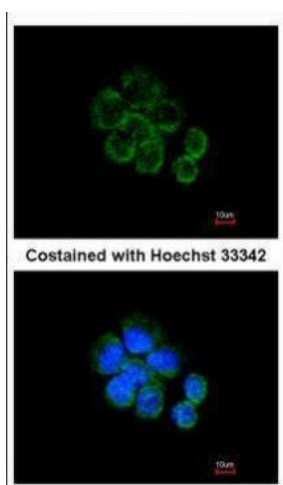
Immunohistochemical analysis of paraffin-embedded NCI-N87 xenograft, using Citrate synthetase (TA308265) antibody at 1:500 dilution.



Citrate synthetase antibody [N2C3] detects Citrate synthetase protein at mitochondria on mouse stomach by immunohistochemical analysis. Sample: Paraffin-embedded mouse stomach. Citrate synthetase antibody [N2C3] (TA308265) dilution: 1:500.



Citrate synthetase antibody [N2C3] detects Citrate synthetase protein at mitochondria on mouse intestine by immunohistochemical analysis. Sample: Paraffin-embedded mouse intestine. Citrate synthetase antibody [N2C3] (TA308265) dilution: 1:500.



Immunofluorescence analysis of methanol-fixed A431, using Citrate synthetase (TA308265) antibody at 1:200 dilution.