

Product datasheet for **TA308264**

RAE1 Rabbit Polyclonal Antibody

Product data:

Product Type:	Primary Antibodies
Applications:	IF, WB
Recommended Dilution:	ICC/IF:1:100-1:1000; WB:1:500-1:3000
Reactivity:	Human (Predicted: Mouse, Rat, Zebrafish, Xenopus, Pig, Bovine, X. tropicalis)
Host:	Rabbit
Isotype:	IgG
Clonality:	Polyclonal
Immunogen:	Synthetic peptide corresponding to a region within amino acids 307 and 368 of RAE1 (Uniprot ID#P78406)
Formulation:	1XPBS, 10% Glycerol (pH7). 0.01% Thimerosal was added as a preservative.
Concentration:	lot specific
Purification:	Purified by antigen-affinity chromatography.
Conjugation:	Unconjugated
Storage:	Store at -20°C as received.
Stability:	Stable for 12 months from date of receipt.
Predicted Protein Size:	41 kDa
Gene Name:	ribonucleic acid export 1
Database Link:	NP_001015885 Entrez Gene 66679 Mouse Entrez Gene 362281 Rat Entrez Gene 8480 Human P78406



[View online »](#)

Background:

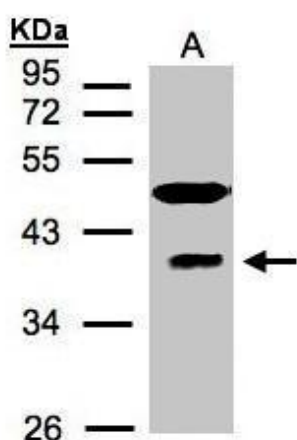
Mutations in the *Schizosaccharomyces pombe* Rae1 and *Saccharomyces cerevisiae* Gle2 genes have been shown to result in accumulation of poly(A)-containing mRNA in the nucleus, suggesting that the encoded proteins are involved in RNA export. The protein encoded by this gene is a homolog of yeast Rae1. It contains four WD40 motifs, and has been shown to localize to distinct foci in the nucleoplasm, to the nuclear rim, and to meshwork-like structures throughout the cytoplasm. This gene is thought to be involved in nucleocytoplasmic transport, and in directly or indirectly attaching cytoplasmic mRNPs to the cytoskeleton. Alternatively spliced transcript variants encoding the same protein have been found for this gene. [provided by RefSeq]

Synonyms:

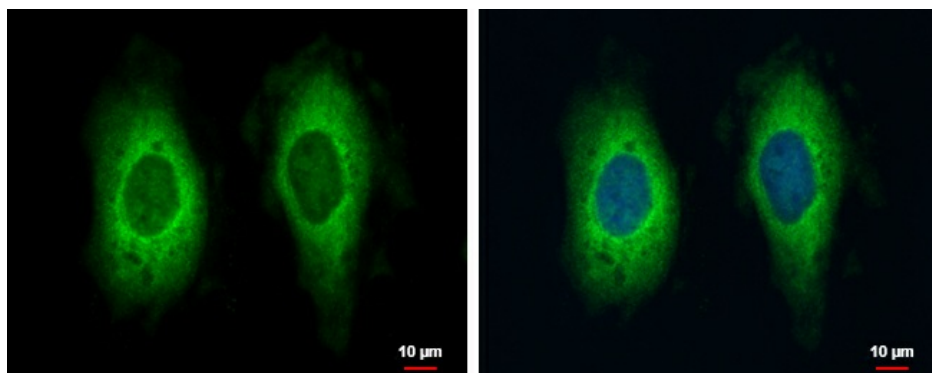
dj481F12.3; dj800J21.1; MIG14; Mnrp41; MRNP41

Note:

Seq homology of immunogen across species: Mouse (100%), Rat (100%), Zebrafish (100%), *Xenopus laevis* (100%), *Xenopus Tropicalis* (100%), Pig (100%), Bovine (100%)

Product images:

Sample (30 ug of whole cell lysate). A: HeLa S3. 12% SDS PAGE. TA308264 diluted at 1:1500



RAE1 antibody [C3], C-term detects RAE1 protein at cytoplasm by immunofluorescent analysis. Sample: HeLa cells were fixed in 4% paraformaldehyde at RT for 15 min. Green: RAE1 protein stained by RAE1 antibody [C3], C-term (TA308264) diluted at 1:500. Blue: