

Product datasheet for **TA308262**

EIPR1 Rabbit Polyclonal Antibody

Product data:

Product Type:	Primary Antibodies
Applications:	IF, WB
Recommended Dilution:	ICC/IF:1:100-1:1000; WB:1:1000-1:10000
Reactivity:	Human (Predicted: Mouse, Chicken, Pig, Rat, Xenopus, Zebrafish, Bovine, X. tropicalis)
Host:	Rabbit
Isotype:	IgG
Clonality:	Polyclonal
Immunogen:	Recombinant fragment corresponding to a region within amino acids 1 and 192 of TSSC1 (Uniprot ID#Q53HC9)
Formulation:	0.1M Tris, 0.1M Glycine, 20% Glycerol (pH7). 0.01% Thimerosal was added as a preservative.
Concentration:	lot specific
Purification:	Purified by antigen-affinity chromatography.
Conjugation:	Unconjugated
Storage:	Store at -20°C as received.
Stability:	Stable for 12 months from date of receipt.
Predicted Protein Size:	44 kDa
Gene Name:	tumor suppressing subtransferable candidate 1
Database Link:	NP_003301 Entrez Gene 362721 RatEntrez Gene 380752 MouseEntrez Gene 7260 Human Q53HC9
Background:	This gene has been reported in PMID 9403053 as one of several tumor-suppressing subtransferable fragments located in the imprinted gene domain of 11p15.5, an important tumor-suppressor gene region. Alterations in this region have been associated with the Beckwith-Wiedemann syndrome, Wilms tumor, rhabdomyosarcoma, adrenocortical carcinoma, and lung, ovarian, and breast cancer. Alignment of this gene to genomic sequence data suggests that this gene resides on chromosome 2 rather than chromosome 11. [provided by RefSeq]
Synonyms:	D12Ert604e; tumor suppressing subtransferable candidate 1

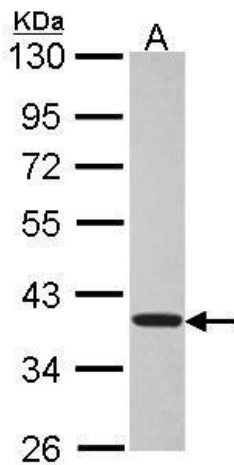


[View online »](#)

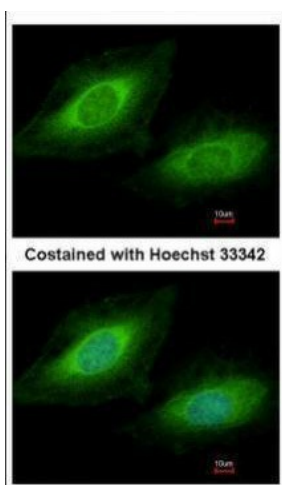
Note: Seq homology of immunogen across species: Mouse (90%), Chicken (92%), Pig (83%), Rat (90%), Xenopus laevis (82%), Zebrafish (83%), Bovine (80%), Xenopus tropicalis (82%)

Protein Families: Druggable Genome

Product images:



Sample (30 ug of whole cell lysate). A: HeLa. 10% SDS PAGE. TA308262 diluted at 1:5000.



Immunofluorescence analysis of methanol-fixed HeLa, using TSSC1 (TA308262) antibody at 1:200 dilution.