

Product datasheet for **TA308259**

CD42c (GP1BB) Rabbit Polyclonal Antibody

Product data:

Product Type:	Primary Antibodies
Applications:	WB
Recommended Dilution:	WB:1:500-1:3000
Reactivity:	Human (Predicted: Mouse, Rat)
Host:	Rabbit
Isotype:	IgG
Clonality:	Polyclonal
Immunogen:	Synthetic peptide corresponding to a region within amino acids 56 and 148 of CD42c (Uniprot ID#P13224)
Formulation:	0.1M Tris, 0.1M Glycine, 10% Glycerol (pH7). 0.01% Thimerosal was added as a preservative.
Concentration:	lot specific
Purification:	Purified by antigen-affinity chromatography.
Conjugation:	Unconjugated
Storage:	Store at -20°C as received.
Stability:	Stable for 12 months from date of receipt.
Predicted Protein Size:	22 kDa
Gene Name:	glycoprotein Ib platelet beta subunit
Database Link:	NP_000398 Entrez Gene 14724 Mouse Entrez Gene 116727 Rat Entrez Gene 2812 Human P13224



[View online »](#)

Background:

Platelet glycoprotein Ib (GPIb) is a heterodimeric transmembrane protein consisting of a disulfide-linked 140 kD alpha chain and 22 kD beta chain. It is part of the GPIb-V-IX system that constitutes the receptor for von Willebrand factor (VWF), and mediates platelet adhesion in the arterial circulation. GPIb alpha chain provides the VWF binding site, and GPIb beta contributes to surface expression of the receptor and participates in transmembrane signaling through phosphorylation of its intracellular domain. Mutations in the GPIb beta subunit have been associated with Bernard-Soulier syndrome, velocardiofacial syndrome and giant platelet disorder. The 206 amino acid precursor of GPIb beta is synthesized from a 1.0 kb mRNA expressed in platelets and megakaryocytes. A 411 amino acid protein arising from a longer, unspliced transcript in endothelial cells has been described; however, the authenticity of this product has been questioned. Yet another less abundant GPIb beta mRNA species of 3.5 kb, expressed in nonhematopoietic tissues such as endothelium, brain and heart, was shown to result from inefficient usage of a non-consensus polyA signal within a separate gene (septin 5) located upstream of this gene. In the absence of polyadenylation from its own imperfect site, the septin 5 gene uses the consensus polyA signal of this gene. [provided by RefSeq]

Synonyms:

BDPLT1; BS; CD42C; GPIBB; GPIbbeta

Note:

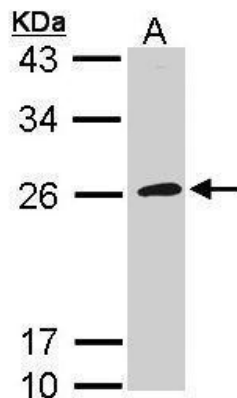
Seq homology of immunogen across species: Mouse (100%), Rat (85%)

Protein Families:

Druggable Genome, Transmembrane

Protein Pathways:

ECM-receptor interaction, Hematopoietic cell lineage

Product images:

Sample (30 ug of whole cell lysate). A: Raji. 12% SDS PAGE. TA308259 diluted at 1:1000.