

## Product datasheet for **TA308258**

### LEFTY2 Rabbit Polyclonal Antibody

#### Product data:

|                         |  |
|-------------------------|--|
| Product Type:           | Primary Antibodies   |
| Applications:           | IHC, WB  |
| Recommended Dilution:   | IHC:1:100-1:1000; WB:1:500-1:3000  |
| Reactivity:             | Human (Predicted: Rat)   |
| Host:                   | Rabbit   |
| Isotype:                | IgG  |
| Clonality:              | Polyclonal   |
| Immunogen:              | Recombinant fragment corresponding to a region within amino acids 25 and 366 of LEFTY2 (Uniprot ID#O00292)                           |
| Formulation:            | 0.1M Tris, 0.1M Glycine, 10% Glycerol (pH7). 0.01% Thimerosal was added as a preservative.   |
| Concentration:          | lot specific   |
| Purification:           | Purified by antigen-affinity chromatography.   |
| Conjugation:            | Unconjugated   |
| Storage:                | Store at -20°C as received.  |
| Stability:              | Stable for 12 months from date of receipt.   |
| Predicted Protein Size: | 41 kDa   |
| Gene Name:              | left-right determination factor 2  |
| Database Link:          | <a href="#">NP_003231</a><br><a href="#">Entrez Gene 289316 Rat</a> <a href="#">Entrez Gene 7044 Human</a><br><a href="#">O00292</a> |

**Background:** This gene encodes a member of the TGF-beta family of proteins. The encoded protein is secreted and plays a role in left-right asymmetry determination of organ systems during development. The protein may also play a role in endometrial bleeding. Mutations in this gene have been associated with left-right axis malformations, particularly in the heart and lungs. Some types of infertility have been associated with dysregulated expression of this gene in the endometrium. Alternative processing of this protein can yield three different products. This gene is closely linked to both a related family member and a related pseudogene. [provided by RefSeq]



[View online »](#)

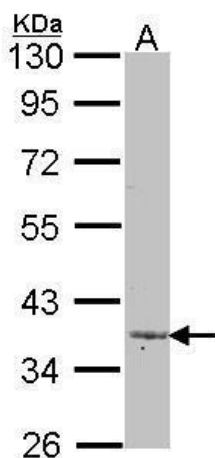
**Synonyms:** EBAF; LEFTA; LEFTYA; TGFB4

**Note:** Seq homology of immunogen across species: Rat (83%)

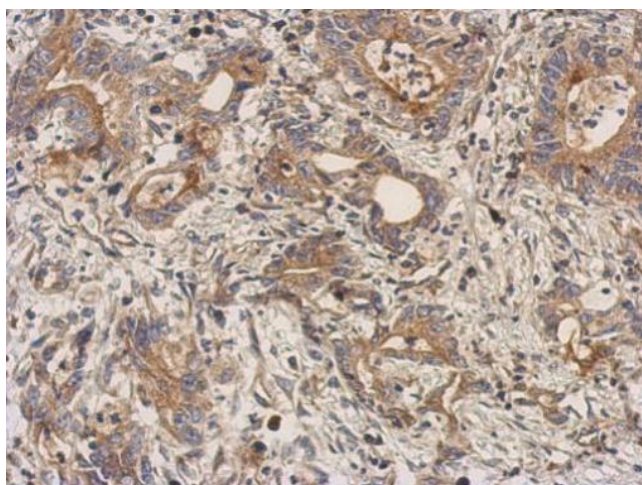
**Protein Families:** Druggable Genome, Secreted Protein

**Protein Pathways:** TGF-beta signaling pathway

**Product images:**



Sample (30 ug of whole cell lysate). A: A431. 10% SDS PAGE. TA308258 diluted at 1:1000.



Immunohistochemical analysis of paraffin-embedded Colon ca, using LEFTY2 (TA308258) antibody at 1:500 dilution.