

Product datasheet for **TA308257**

CKS2 Rabbit Polyclonal Antibody

Product data:

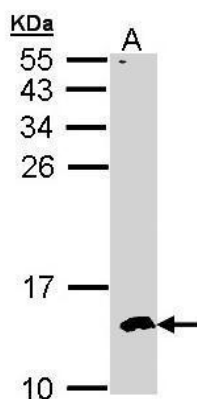
Product Type:	Primary Antibodies
Applications:	IF, WB
Recommended Dilution:	ICC/IF:1:100-1:1000; WB:1:500-1:3000
Reactivity:	Human (Predicted: Rat, Zebrafish, Xenopus, Bovine, Rhesus Monkey, X. tropicalis, Mouse)
Host:	Rabbit
Isotype:	IgG
Clonality:	Polyclonal
Immunogen:	Synthetic peptide corresponding to a region within amino acids 15 and 79 of CKS2 (Uniprot ID#P33552)
Formulation:	0.1M Tris, 0.1M Glycine, 10% Glycerol (pH7). 0.01% Thimerosal was added as a preservative.
Concentration:	lot specific
Purification:	Purified by antigen-affinity chromatography.
Conjugation:	Unconjugated
Storage:	Store at -20°C as received.
Stability:	Stable for 12 months from date of receipt.
Predicted Protein Size:	10 kDa
Gene Name:	CDC28 protein kinase regulatory subunit 2
Database Link:	NP_001818 Entrez Gene 66197 Mouse Entrez Gene 498709 Rat Entrez Gene 1164 Human P33552
Background:	CKS2 protein binds to the catalytic subunit of the cyclin dependent kinases and is essential for their biological function. The CKS2 mRNA is found to be expressed in different patterns through the cell cycle in HeLa cells, which reflects specialized role for the encoded protein. [provided by RefSeq]
Synonyms:	CKSHS2
Note:	Seq homology of immunogen across species: Mouse (93%), Rat (93%), Zebrafish (92%), Xenopus laevis (100%), Xenopus Tropicalis (93%), Rhesus Monkey (100%), Bovine (100%)



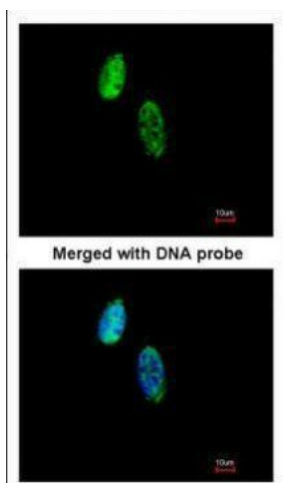
[View online »](#)

Protein Families: Druggable Genome, Stem cell - Pluripotency

Product images:



Sample (30 ug of whole cell lysate). A: Hep G2. 15% SDS PAGE. TA308257 diluted at 1:500.



Immunofluorescence analysis of paraformaldehyde-fixed HeLa, using CKS-2 (TA308257) antibody at 1:500 dilution.