

Product datasheet for **TA308250**

BXDC1 (RPF2) Rabbit Polyclonal Antibody

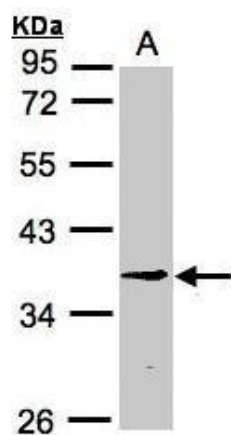
Product data:

Product Type:	Primary Antibodies
Applications:	WB
Recommended Dilution:	WB:1:500-1:3000
Reactivity:	Human (Predicted: Mouse, Bovine)
Host:	Rabbit
Isotype:	IgG
Clonality:	Polyclonal
Immunogen:	Recombinant fragment corresponding to a region within amino acids 1 and 217 of BXDC1 (Uniprot ID#Q9H7B2)
Formulation:	0.1M Tris, 0.1M Glycine, 10% Glycerol (pH7). 0.01% Thimerosal was added as a preservative.
Concentration:	lot specific
Purification:	Purified by antigen-affinity chromatography.
Conjugation:	Unconjugated
Storage:	Store at -20°C as received.
Stability:	Stable for 12 months from date of receipt.
Predicted Protein Size:	36 kDa
Gene Name:	ribosome production factor 2 homolog
Database Link:	NP_115570 Entrez Gene 67239 Mouse Entrez Gene 84154 Human Q9H7B2
Synonyms:	bA397G5.4; BXDC1
Note:	Seq homology of immunogen across species: Mouse (93%), Bovine (95%)



[View online »](#)

Product images:



Sample (30ug whole cell lysate). A:H1299. 10% SDS PAGE. TA308250 diluted at 1:3000