

## Product datasheet for **TA308248**

### FBXL3 Rabbit Polyclonal Antibody

#### Product data:

Product Type:	Primary Antibodies
Applications:	IF, WB
Recommended Dilution:	ICC/IF:1:100-1:1000; WB:1:500-1:3000
Reactivity:	Human (Predicted: Rat, Sheep, Rhesus Monkey)
Host:	Rabbit
Isotype:	IgG
Clonality:	Polyclonal
Immunogen:	Recombinant fragment corresponding to a region within amino acids 14 and 309 of FBXL3 (Uniprot ID#Q9UKT7)
Formulation:	0.1M Tris, 0.1M Glycine, 10% Glycerol (pH7). 0.01% Thimerosal was added as a preservative.
Concentration:	lot specific
Purification:	Purified by antigen-affinity chromatography.
Conjugation:	Unconjugated
Storage:	Store at -20°C as received.
Stability:	Stable for 12 months from date of receipt.
Predicted Protein Size:	49 kDa
Gene Name:	F-box and leucine-rich repeat protein 3
Database Link:	<a href="#">NP_036290</a> <a href="#">Entrez Gene 306129 RatEntrez Gene 26224 Human Q9UKT7</a>

**Background:** This gene encodes a member of the F-box protein family which is characterized by an approximately 40 amino acid motif, the F-box. The F-box proteins constitute one of the four subunits of ubiquitin protein ligase complex called SCFs (SKP1-cullin-F-box), which function in phosphorylation-dependent ubiquitination. The F-box proteins are divided into 3 classes: Fbws containing WD-40 domains, Fbls containing leucine-rich repeats, and Fbxs containing either different protein-protein interaction modules or no recognizable motifs. The protein encoded by this gene belongs to the Fbls class and, in addition to an F-box, contains several tandem leucine-rich repeats and is localized in the nucleus. [provided by RefSeq]



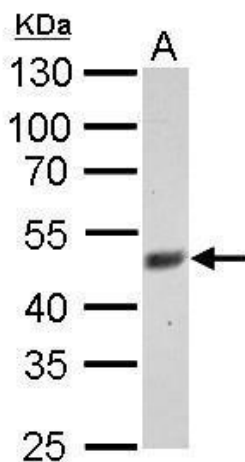
[View online »](#)

**Synonyms:** FBL3; FBL3A; FBXL3A

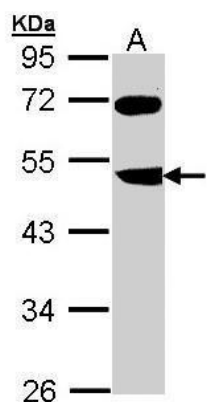
**Note:** Seq homology of immunogen across species: Rat (100%), Sheep (100%), Rhesus Monkey (100%)

**Protein Families:** Druggable Genome

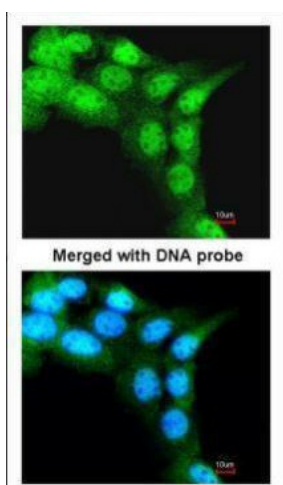
**Product images:**



FBXL3 antibody detects FBXL3 protein by Western blot analysis. A. 30 ug C2C12 whole cell lysate/extract. 10 % SDS-PAGE. FBXL3 antibody (TA308248) dilution: 1:500



Sample (30 ug of whole cell lysate). A: Molt-4. 10% SDS PAGE. TA308248 diluted at 1:1000.



Immunofluorescence analysis of paraformaldehyde-fixed A431, using FBXL3 (TA308248) antibody at 1:200 dilution.