

Product datasheet for **TA308247**

ATP1B3 Rabbit Polyclonal Antibody

Product data:

Product Type:	Primary Antibodies
Applications:	IHC, WB
Recommended Dilution:	IHC:1:100-1:1000; WB:1:500-1:3000
Reactivity:	Human (Predicted: Rabbit)
Host:	Rabbit
Isotype:	IgG
Clonality:	Polyclonal
Immunogen:	Recombinant fragment corresponding to a region within amino acids 53 and 279 of ATPase beta3 (Na ⁺ /K ⁺) (Uniprot ID#P54709)
Formulation:	0.1M Tris, 0.1M Glycine, 20% Glycerol (pH7). 0.01% Thimerosal was added as a preservative.
Concentration:	lot specific
Purification:	Purified by antigen-affinity chromatography.
Conjugation:	Unconjugated
Storage:	Store at -20°C as received.
Stability:	Stable for 12 months from date of receipt.
Predicted Protein Size:	32 kDa
Gene Name:	ATPase Na ⁺ /K ⁺ transporting subunit beta 3
Database Link:	NP_001670 Entrez Gene 483 Human P54709



[View online »](#)

Background:

The protein encoded by this gene belongs to the family of Na⁺/K⁺ and H⁺/K⁺ ATPases beta chain proteins, and to the subfamily of Na⁺/K⁺ -ATPases. Na⁺/K⁺ -ATPase is an integral membrane protein responsible for establishing and maintaining the electrochemical gradients of Na and K ions across the plasma membrane. These gradients are essential for osmoregulation, for sodium-coupled transport of a variety of organic and inorganic molecules, and for electrical excitability of nerve and muscle. This enzyme is composed of two subunits, a large catalytic subunit (alpha) and a smaller glycoprotein subunit (beta). The beta subunit regulates, through assembly of alpha/beta heterodimers, the number of sodium pumps transported to the plasma membrane. The glycoprotein subunit of Na⁺/K⁺ -ATPase is encoded by multiple genes. This gene encodes a beta 3 subunit. This gene encodes a beta 3 subunit. A pseudogene exists for this gene, and it is located on chromosome 2. [provided by RefSeq]

Synonyms:

ATPB-3; CD298

Note:

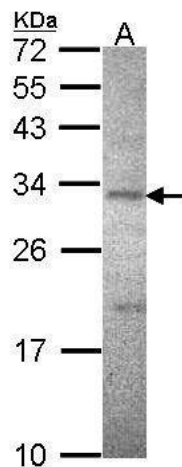
Seq homology of immunogen across species: Rabbit (81%)

Protein Families:

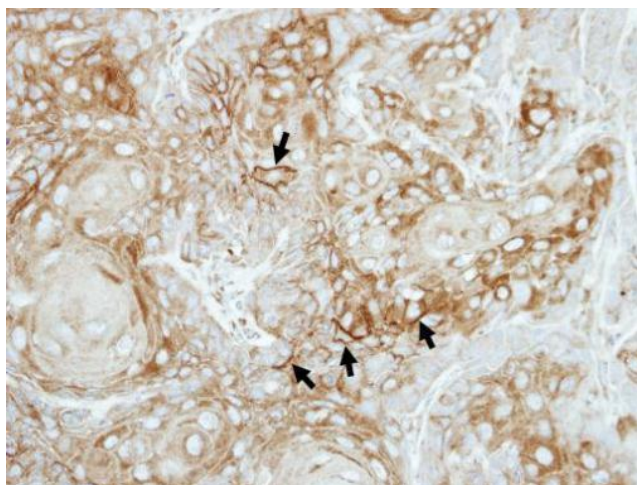
Transmembrane

Protein Pathways:

Cardiac muscle contraction

Product images:

Sample (30 ug of whole cell lysate). A: HeLa. 12% SDS PAGE. ATPase beta3 (Na⁺/K⁺) antibody. TA308247 diluted at 1:1000.



Immunohistochemical analysis of paraffin-embedded Ca922 xenograft, using ATPase beta3 (Na⁺/K⁺) (TA308247) antibody at 1:100 dilution.