

Product datasheet for **TA308245**

ENTPD6 Rabbit Polyclonal Antibody

Product data:

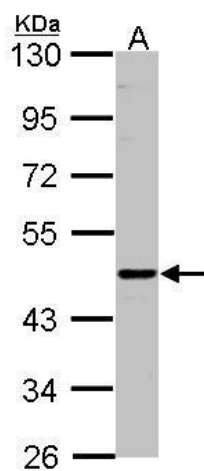
Product Type:	Primary Antibodies
Applications:	IHC, WB
Recommended Dilution:	IHC:1:100-1:1000; WB:1:500-1:3000
Reactivity:	Human (Predicted: Mouse, Rat, Bovine)
Host:	Rabbit
Isotype:	IgG
Clonality:	Polyclonal
Immunogen:	Recombinant protein fragment contain a sequence corresponding to a region within amino acids 114 and 285 of ENTPD6
Formulation:	0.1M Tris, 0.1M Glycine, 10% Glycerol (pH7). 0.01% Thimerosal was added as a preservative.
Concentration:	lot specific
Purification:	Purified by antigen-affinity chromatography.
Conjugation:	Unconjugated
Storage:	Store at -20°C as received.
Stability:	Stable for 12 months from date of receipt.
Predicted Protein Size:	53 kDa
Gene Name:	ectonucleoside triphosphate diphosphohydrolase 6 (putative)
Database Link:	NP_001107561 Entrez Gene 12497 Mouse Entrez Gene 85260 Rat Entrez Gene 955 Human O75354
Background:	ENTPD6 is similar to E-type nucleotidases (NTPases). NTPases, such as CD39, mediate catabolism of extracellular nucleotides. ENTPD6 contains 4 apyrase-conserved regions which is characteristic of NTPases. Alternatively spliced transcript variants encoding different isoforms have been found for this gene. [provided by RefSeq]
Synonyms:	CD39L2; dJ738P15.3; IL-6SAG; IL6ST2; NTPDase-6
Note:	Seq homology of immunogen across species: Mouse (93%), Rat (93%), Bovine (89%)
Protein Families:	Secreted Protein, Transmembrane



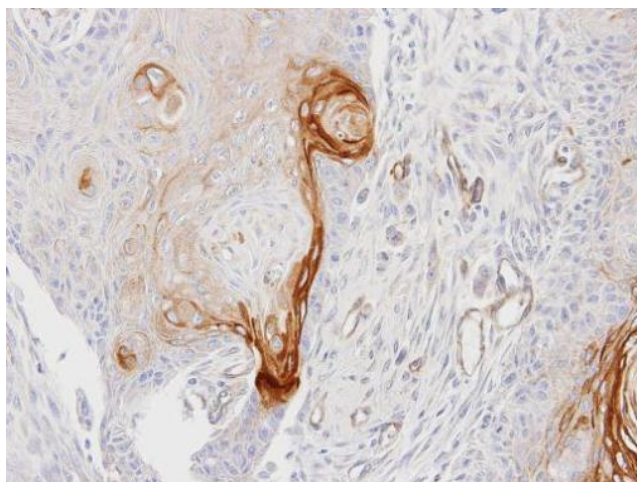
[View online »](#)

Protein Pathways: Purine metabolism, Pyrimidine metabolism

Product images:



Sample (30 ug of whole cell lysate). A:H1299.
7.5% SDS PAGE. TA308245 diluted at 1:500



Immunohistochemical analysis of paraffin-embedded Ca922 xenograft, using ENTPD6 (TA308245) antibody at 1:100 dilution.