

Product datasheet for **TA308243**

ENO3 Rabbit Polyclonal Antibody

Product data:

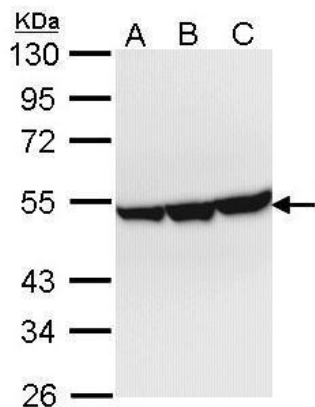
Product Type:	Primary Antibodies
Applications:	IHC, WB
Recommended Dilution:	IHC:1:100-1:1000; WB:1:1000-1:10000
Reactivity:	Human
Host:	Rabbit
Isotype:	IgG
Clonality:	Polyclonal
Immunogen:	Recombinant fragment corresponding to a region within amino acids 196 and 434 of ENO3 (Uniprot ID#P13929)
Formulation:	0.1M Tris, 0.1M Glycine, 10% Glycerol (pH7). 0.01% Thimerosal was added as a preservative.
Concentration:	lot specific
Purification:	Purified by antigen-affinity chromatography.
Conjugation:	Unconjugated
Storage:	Store at -20°C as received.
Stability:	Stable for 12 months from date of receipt.
Predicted Protein Size:	47 kDa
Gene Name:	enolase 3
Database Link:	NP_001967 Entrez Gene 2027 Human P13929
Background:	This gene encodes one of the three enolase isoenzymes found in mammals. This isoenzyme, a homodimer, is found in skeletal muscle cells in the adult. A switch from alpha enolase to beta enolase occurs in muscle tissue during development in rodents. Mutations in this gene can be associated with metabolic myopathies that may result from decreased stability of the enzyme. Two transcripts have been identified for this gene that differ only in their 5' UTR. [provided by RefSeq]
Synonyms:	GSD13; MSE



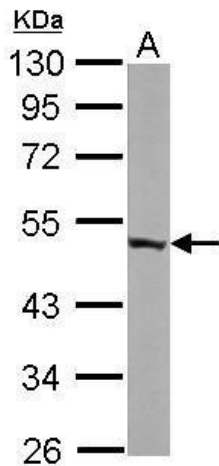
[View online »](#)

Protein Pathways: Glycolysis / Gluconeogenesis, Metabolic pathways, RNA degradation

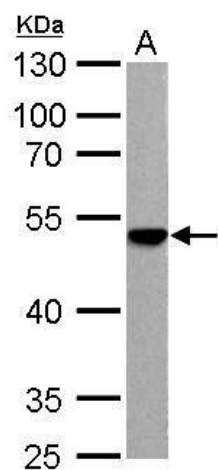
Product images:



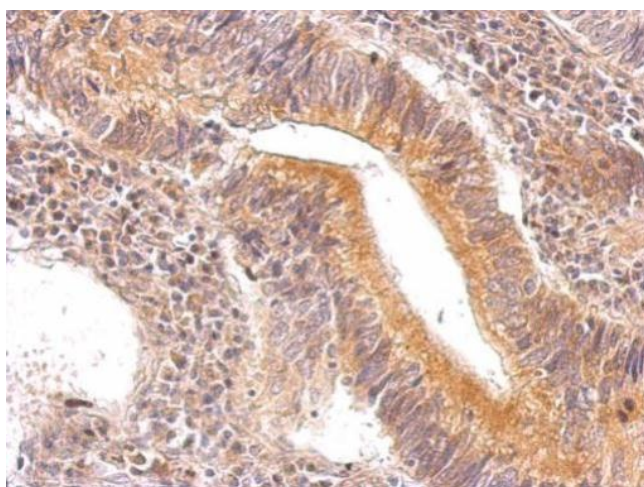
Sample (30 ug of whole cell lysate). A: Hep G2. B: Molt-4. C: Raji. 10% SDS PAGE. TA308243 diluted at 1:1000.



Sample (50 ug of whole cell lysate). A: mouse brain. 10% SDS PAGE. TA308243 diluted at 1:10000.



ENO3 antibody detects ENO3 protein by Western blot analysis. A. 30 ug Rat2 whole cell lysate/extract. 10 % SDS-PAGE. ENO3 antibody (TA308243) dilution: 1:1000



ENO3 antibody detects ENO3 protein at cytosol on gastric carcinoma by immunohistochemical analysis. Sample: Paraffin-embedded gastric carcinoma. ENO3 antibody (TA308243) dilution: 1:500.