

Product datasheet for **TA308242**

BBS7 Rabbit Polyclonal Antibody

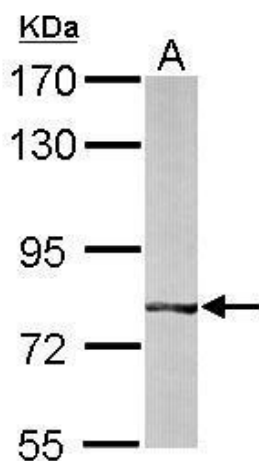
Product data:

Product Type:	Primary Antibodies
Applications:	WB
Recommended Dilution:	WB:1:500-1:3000
Reactivity:	Human, Mouse (Predicted: Rat, Bovine)
Host:	Rabbit
Isotype:	IgG
Clonality:	Polyclonal
Immunogen:	Recombinant fragment corresponding to a region within amino acids 263 and 540 of BBS7 (Uniprot ID#Q8IWZ6)
Formulation:	0.1M Tris, 0.1M Glycine, 10% Glycerol (pH7). 0.01% Thimerosal was added as a preservative.
Concentration:	lot specific
Purification:	Purified by antigen-affinity chromatography.
Conjugation:	Unconjugated
Storage:	Store at -20°C as received.
Stability:	Stable for 12 months from date of receipt.
Predicted Protein Size:	80 kDa
Gene Name:	Bardet-Biedl syndrome 7
Database Link:	NP_060660 Entrez Gene 71492 MouseEntrez Gene 361930 RatEntrez Gene 55212 Human Q8IWZ6
Background:	Mutations in this gene have been observed in patients with Bardet-Biedl syndrome type 7. The encoded protein may play a role in eye, limb, cardiac and reproductive system development. Two transcript variants encoding distinct isoforms have been identified for this gene. [provided by RefSeq]
Synonyms:	BBS2L1
Note:	Seq homology of immunogen across species: Rat (93%), Bovine (95%)

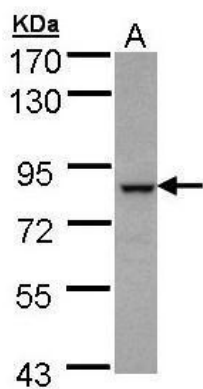


[View online »](#)

Product images:



Sample (50 ug of whole cell lysate). A: mouse liver. 7.5% SDS PAGE. TA308242 diluted at 1:1000.



Sample (30 ug of whole cell lysate). A: A431. 7.5% SDS PAGE. TA308242 diluted at 1:1000