

## Product datasheet for **TA308241**

### GBA Rabbit Polyclonal Antibody

#### Product data:

Product Type:	Primary Antibodies
Applications:	IHC, WB
Recommended Dilution:	IHC:1:100-1:1000; WB:1:500-1:3000
Reactivity:	Human (Predicted: Chimpanzee)
Host:	Rabbit
Isotype:	IgG
Clonality:	Polyclonal
Immunogen:	Recombinant fragment corresponding to a region within amino acids 65 and 384 of GBA (Uniprot ID#P04062)
Formulation:	1XPBS, 20% Glycerol (pH7). 0.025% ProClin 300 was added as a preservative.
Purification:	Purified by antigen-affinity chromatography.
Conjugation:	Unconjugated
Storage:	Store at -20°C as received.
Stability:	Stable for 12 months from date of receipt.
Predicted Protein Size:	60 kDa
Gene Name:	glucosylceramidase beta
Database Link:	<a href="#">NP_001005750</a> <a href="#">Entrez Gene 2629 Human P04062</a>
Background:	This gene encodes a lysosomal membrane protein that cleaves the beta-glucosidic linkage of glycosylceramide, an intermediate in glycolipid metabolism. Mutations in this gene cause Gaucher disease, a lysosomal storage disease characterized by an accumulation of glucocerebrosides. A related pseudogene is approximately 12 kb downstream of this gene on chromosome 1. Alternative splicing results in multiple transcript variants encoding the same protein. [provided by RefSeq]
Synonyms:	acid (includes glucosylceramidase); beta; D-glucosyl-N-acylsphingosine glucohydrolase; GBA1; GCB; GLUC; glucocerebrosidase; glucocerebrosidase (alt.); glucosidase; lysosomal glucocerebrosidase; OTTHUMP00000033992; OTTHUMP00000033993



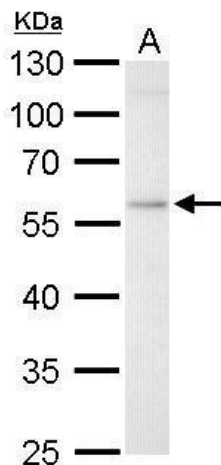
[View online »](#)

**Note:** Seq homology of immunogen across species: Chimpanzee (100%)

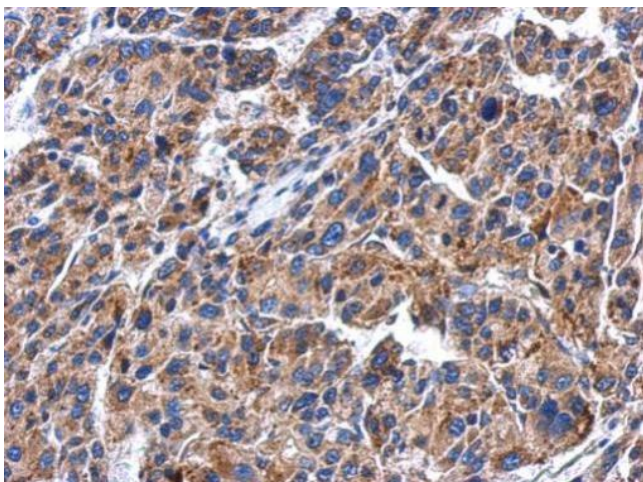
**Protein Families:** Druggable Genome

**Protein Pathways:** Lysosome, Metabolic pathways, Other glycan degradation, Sphingolipid metabolism

**Product images:**



GBA antibody detects GBA protein by Western blot analysis. A. 30 ug HepG2 whole cell lysate/extract. 10 % SDS-PAGE. GBA antibody (TA308241) dilution: 1:1000



Immunohistochemical analysis of paraffin-embedded Hepatoma, using GBA (TA308241) antibody at 1:500 dilution.