

Product datasheet for **TA308238**

GLB1 Rabbit Polyclonal Antibody

Product data:

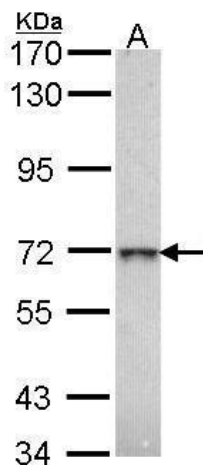
Product Type:	Primary Antibodies
Applications:	IHC, WB
Recommended Dilution:	IHC:1:100-1:1000; WB:1:500-1:3000
Reactivity:	Human (Predicted: Dog, Feline)
Host:	Rabbit
Isotype:	IgG
Clonality:	Polyclonal
Immunogen:	Recombinant fragment corresponding to a region within amino acids 166 and 677 of beta-Gal (Uniprot ID#P16278)
Formulation:	1XPBS, 1% BSA, 20% Glycerol (pH7). 0.025% ProClin 300 was added as a preservative.
Concentration:	lot specific
Purification:	Purified by antigen-affinity chromatography.
Conjugation:	Unconjugated
Storage:	Store at -20°C as received.
Stability:	Stable for 12 months from date of receipt.
Predicted Protein Size:	76 kDa
Gene Name:	galactosidase beta 1
Database Link:	NP_001129074 Entrez Gene 403873 Dog Entrez Gene 2720 Human P16278
Background:	This gene encodes beta-galactosidase-1, a lysosomal enzyme that hydrolyzes the terminal beta-galactose from ganglioside substrates and other glycoconjugates. Defects in this gene are the cause of GM1-gangliosidosis and Morquio B syndrome. Multiple transcript variants encoding different isoforms have been found for this gene. [provided by RefSeq]
Synonyms:	EBP; ELNR1; MPS4B
Note:	Seq homology of immunogen across species: Dog (82%), Cat (81%)
Protein Families:	Druggable Genome



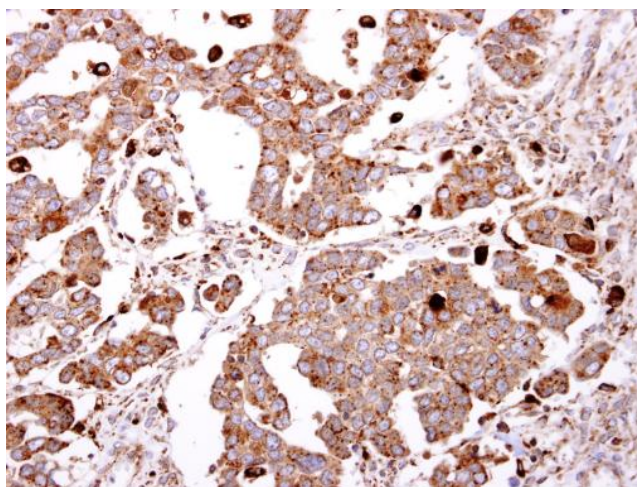
[View online »](#)

Protein Pathways:

Galactose metabolism, Glycosaminoglycan degradation, Glycosphingolipid biosynthesis - ganglio series, Lysosome, Metabolic pathways, Other glycan degradation, Sphingolipid metabolism

Product images:

Sample (30 ug of whole cell lysate). A: H1299. 7.5% SDS PAGE. TA308238 diluted at 1:1000.



beta-Gal antibody [N2C3] detects beta-Gal protein at cytosol on human ovarian carcinoma by immunohistochemical analysis. Sample: Paraffin-embedded human ovarian carcinoma. beta-Gal antibody [N2C3] (TA308238) dilution: 1:500.