

## Product datasheet for **TA308237**

### IDH3G Rabbit Polyclonal Antibody

#### Product data:

Product Type:	Primary Antibodies
Applications:	IHC
Recommended Dilution:	IHC:1:100-1:1000
Reactivity:	Human, Mouse
Host:	Rabbit
Isotype:	IgG
Clonality:	Polyclonal
Immunogen:	Recombinant fragment corresponding to a region within amino acids 1 and 287 of IDH3G (Uniprot ID#P51553)
Formulation:	0.1M Tris, 0.1M Glycine, 10% Glycerol (pH7). 0.01% Thimerosal was added as a preservative.
Concentration:	lot specific
Purification:	Purified by antigen-affinity chromatography.
Conjugation:	Unconjugated
Storage:	Store at -20°C as received.
Stability:	Stable for 12 months from date of receipt.
Predicted Protein Size:	43 kDa
Gene Name:	isocitrate dehydrogenase 3 (NAD(+)) gamma
Database Link:	<a href="#">NP_004126</a> <a href="#">Entrez Gene 15929 Mouse</a> <a href="#">Entrez Gene 3421 Human</a> <a href="#">P51553</a>



[View online »](#)

**Background:**

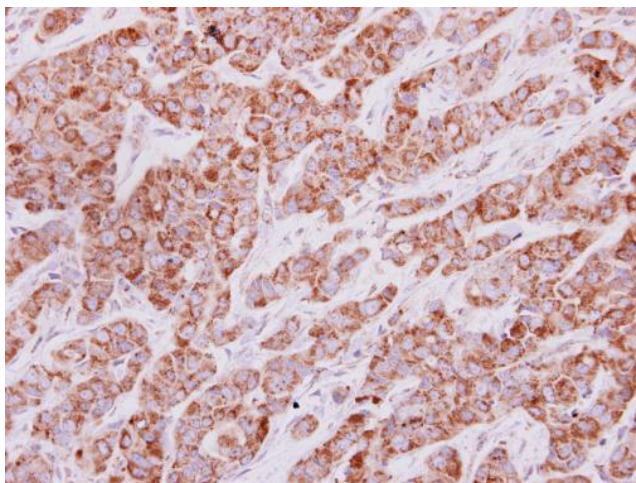
Isocitrate dehydrogenases catalyze the oxidative decarboxylation of isocitrate to 2-oxoglutarate. These enzymes belong to two distinct subclasses, one of which utilizes NAD(+) as the electron acceptor and the other NADP(+). Five isocitrate dehydrogenases have been reported: three NAD(+)-dependent isocitrate dehydrogenases, which localize to the mitochondrial matrix, and two NADP(+)-dependent isocitrate dehydrogenases, one of which is mitochondrial and the other predominantly cytosolic. NAD(+)-dependent isocitrate dehydrogenases catalyze the allosterically regulated rate-limiting step of the tricarboxylic acid cycle. Each isozyme is a heterotetramer that is composed of two alpha subunits, one beta subunit, and one gamma subunit. The protein encoded by this gene is the gamma subunit of one isozyme of NAD(+)-dependent isocitrate dehydrogenase. This gene is a candidate gene for periventricular heterotopia. Several alternatively spliced transcript variants of this gene have been described, but only some of their full length natures have been determined. [provided by RefSeq]

**Synonyms:**

H-IDHG

**Protein Pathways:**

Citrate cycle (TCA cycle), Metabolic pathways

**Product images:**


IDH3G antibody detects IDH3G protein at cytoplasm on lung carcinoma by immunohistochemical analysis. Sample: Paraffin-embedded lung carcinoma. IDH3G antibody (TA308237) dilution: 1:250.