

## Product datasheet for **TA308235**

### **KRTHA3B (KRT33B) Rabbit Polyclonal Antibody**

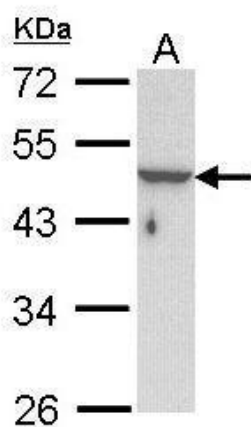
#### **Product data:**

<b>Product Type:</b>	Primary Antibodies
<b>Applications:</b>	WB
<b>Recommended Dilution:</b>	WB:1:500-1:3000
<b>Reactivity:</b>	Human (Predicted: Mouse, Rat)
<b>Host:</b>	Rabbit
<b>Isotype:</b>	IgG
<b>Clonality:</b>	Polyclonal
<b>Immunogen:</b>	Recombinant fragment corresponding to a region within amino acids 1 and 229 of KRTHA3B (Uniprot ID#Q14525)
<b>Formulation:</b>	0.1M Tris, 0.1M Glycine, 10% Glycerol (pH7). 0.01% Thimerosal was added as a preservative.
<b>Concentration:</b>	lot specific
<b>Purification:</b>	Purified by antigen-affinity chromatography.
<b>Conjugation:</b>	Unconjugated
<b>Storage:</b>	Store at -20°C as received.
<b>Stability:</b>	Stable for 12 months from date of receipt.
<b>Predicted Protein Size:</b>	46 kDa
<b>Gene Name:</b>	keratin 33B
<b>Database Link:</b>	<a href="#">NP_002270</a> <a href="#">Entrez Gene 16671 MouseEntrez Gene 450227 RatEntrez Gene 3884 Human Q14525</a>
<b>Background:</b>	The protein encoded by this gene is a member of the keratin gene family. It is one of the type I hair keratin genes which are clustered in a region of chromosome 17q12-q21 and have the same direction of transcription. As a type I hair keratin, it is an acidic protein which heterodimerizes with type II keratins to form hair and nails. There are two isoforms of this protein, encoded by two separate genes, KRTHA3A and KRTHA3B. [provided by RefSeq]
<b>Synonyms:</b>	Ha-3II; HA3II; hHa3-II; K33B; KRTHA3A; KRTHA3B
<b>Note:</b>	Seq homology of immunogen across species: Mouse (83%), Rat (86%)



[View online »](#)

## Product images:



Sample (30 ug of whole cell lysate). A: HeLa. 10% SDS PAGE. TA308235 diluted at 1:1000.